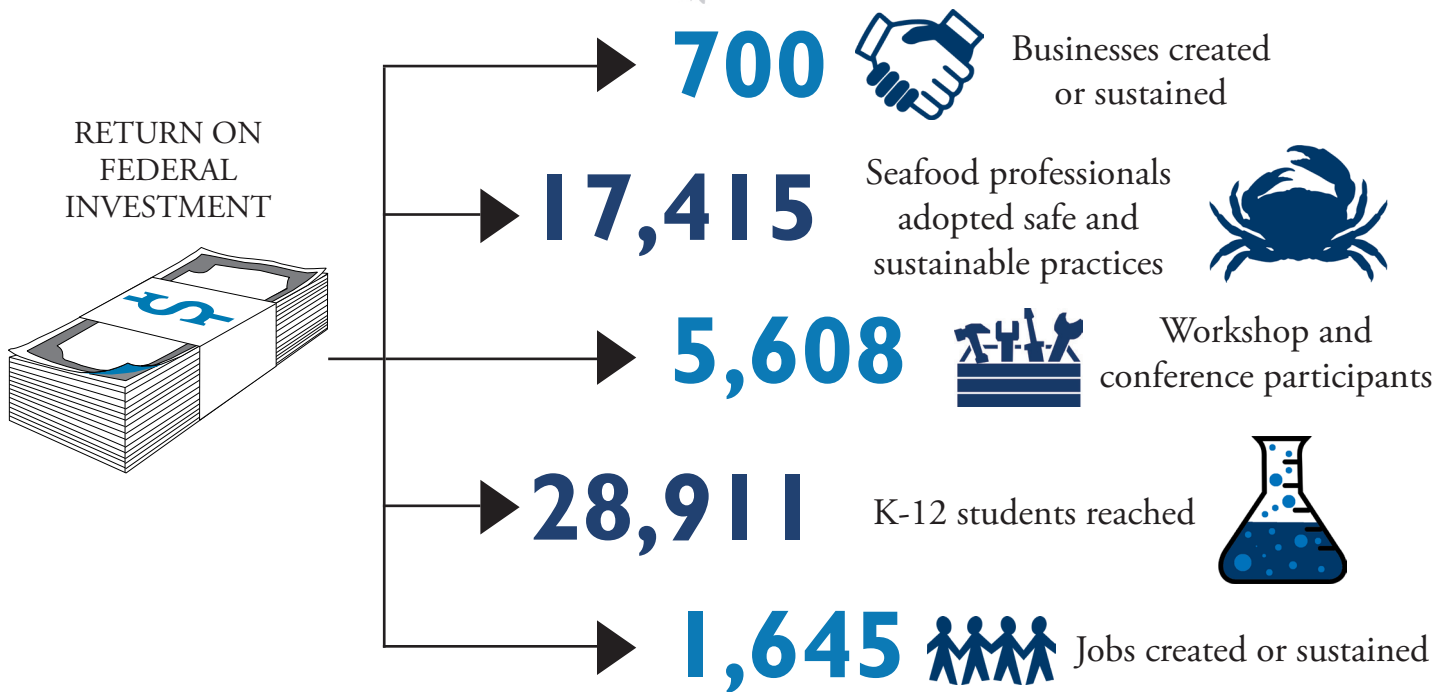


LOUISIANA SEA GRANT

\$17.7 M
economic impact in 2015

*Metrics reported to National Office in June 2016
for work completed Feb 2015 to Jan 2016.*



Fishermen sell \$1.2M in seafood sales as result of Sea Grant led program



Fishermen in Louisiana benefit from selling seafood directly to consumers.
Credit: Louisiana Sea Grant

Direct marketing of seafood is becoming an important source of income for Louisiana commercial fishers. The Delcambre Direct Seafood program, one of four programs under the Louisiana Direct Seafood program administered by Louisiana Sea Grant, had 30 vessels selling directly to consumers in 2015. In total, those 30 vessels made 182 trips, harvesting nearly 400,000 pounds of shrimp, which was sold to more than 12,000 consumers for a combined total value of \$1.2 million in revenue.
louisianadirectseafood.com/AboutUs.htm



Sea Grant helps ensure turtle excluder devices on shrimp boats are in compliance.
Credit: Louisiana Sea Grant

“Through our research, we’ve developed basic seafood products, like the black drum you eat in local restaurants, as well as research on fisheries without market presence, aimed at bringing them into the market.”

**- Robert Twilley,
Louisiana Sea Grant**

Sea Grant co-hosted turtle excluder devices compliance workshops, saved commercial fishermen \$280,000 in potential fines

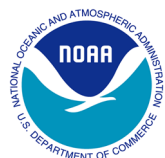
Turtle excluder devices (TEDs) are required by law on all shrimp fishing vessels to reduce negative impacts on endangered species. Louisiana Sea Grant and the National Marine Fisheries Service (NMFS) Gear Management Team provided hands on training for crew members to gain more knowledge about TEDs, how they are to be constructed, how to check and measure them, and how to assist others in fixing any discrepancies.

During these Sea Grant-NMFS led workshops, a total of 42 shrimp boats with approximately 120 TEDs were checked for compliance. Thirty-one vessels reported no issues. Ten shrimp boats had minor issues and 1 boat had major issues with their turtle exclusion devices. Corrections of these issues on the 10 vessels through this workshop saved commercial fishing vessel owners \$280,000 in potential fines. laseagrant.org/outreach/workshops

Louisiana Sea Grant helps barrier island residents increase resiliency to coastal hazards

As the only inhabited barrier island in Louisiana, Grand Isle has been and continues to be threatened by episodic and chronic coastal hazards, including flooding and hurricanes. Grande Isle protects millions of people and their property in Houma, New Orleans and other inland communities from destructive hurricanes and tropical storms, but comes at a cost to the local community in order to maintain a stable infrastructure on the island.

Louisiana Sea Grant partnered with Grand Isle officials and LSU’s Coastal Sustainability Studio to develop and implement designs that promote community sustainability and resiliency for the local landscape and critical infrastructure. The LSU students developed their concepts after site visits and discussions with island residents. laseagrant.org/communications/voices/grand-isle-diaries



Contact information

Robert Twilley, PhD. Director, Louisiana Sea Grant, rtwilley@lsu.edu, Office: (225) 578-6445