



Louisiana Sea Grant Seeks Public Comment for Program Review

The Louisiana Sea Grant College Program (LSG) will have its scheduled four-year site review on Sept. 10-12, 2019 at the Estuary at the Water Campus, 1110 South River Road, Baton Rouge, LA 70802.

A federal Site Review Team convened by the National Sea Grant College Program will consider all aspects of LSG's management and organization, performance, stakeholder engagement and collaborative activities, including those with various offices of the National Oceanic and Atmospheric Administration (NOAA).

People who would like to offer comments to the review team on these aspects of the program are invited to submit written statements no later than Tuesday, Sept. 3, 2019. Comments should be e-mailed to the National Sea Grant College Program at oar.sg-feedback@noaa.gov. Please put "Louisiana Sea Grant Site Review" in the subject line.

Thank you for assisting us by letting the review team hear from you.

Louisiana Commercial Shark Possession Limit to Increase

The daily possession limit for commercially harvested large coastal sharks will increase from 45 to 55 per day effective immediately. The large coastal shark group includes great hammerhead, scalloped hammerhead, smooth hammerhead, nurse shark, blacktip shark, bull shark, lemon shark, sandbar shark, silky shark, spinner shark and tiger shark.

The Louisiana Department of Wildlife and Fisheries (LDWF) Secretary Jack Montoucet was granted authority by the Louisiana Wildlife and Fisheries Commission (LWFC) to make season adjustments if deemed necessary. This increase is concurrent with a similar in-season adjustment by NOAA Fisheries in federal waters in the Gulf of Mexico. The adjustment was made as a result of under harvest during the quota year.

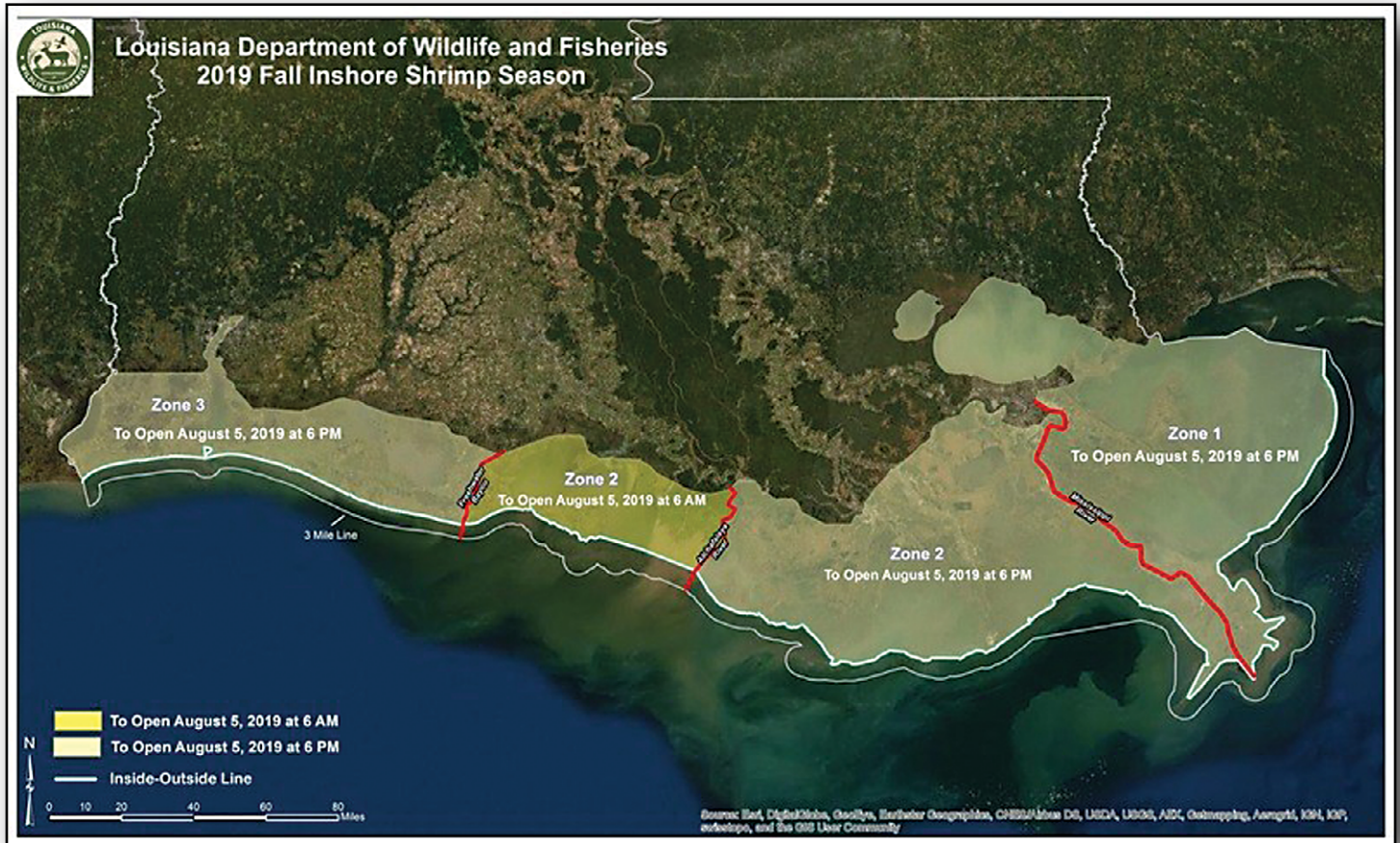
The commercial large coastal shark season is scheduled to close on Dec. 31, 2019.

No possession of sandbar sharks is allowed unless a commercial fisherman is in possession of a valid federal shark research permit in their name.

Fall Inshore Shrimp Season Opening

Season openings are as follows:

- The portion of state inside waters from the Mississippi/Louisiana state line westward to the Atchafalaya River Ship Channel at Eugene Island as delineated by the red Channel Buoy Line to open at 6 p.m. Aug. 5, 2019, and;
- The portion of state inside waters from the Atchafalaya River Ship Channel at Eugene Island as delineated by the red Channel Buoy Line westward to the western shore of Freshwater Bayou to open at 6 a.m. Aug. 5, 2019, and;
- The portion of state inside waters from the western shore of Freshwater Bayou westward to the Louisiana/Texas state line to open at 6 p.m. Aug. 5, 2019.



Reducing Alligator Tag Fee by \$1 for 2020 and 2021

The Louisiana Wildlife and Fisheries Commission approved a notice of intent (NOI) to reduce the LDWF alligator hide tag fee from \$4 to \$3 for the 2020 and 2021 calendar years during its August meeting in New Orleans.

The reduction was in response to a request from the Louisiana Alligator Farmers and Ranchers Association as it seeks to fund efforts in support of Louisiana's alligator industry. Currently, a \$4 fee is collected by LDWF for each alligator hide shipped out of state. Each \$1 gained from the tag reduction will be directed by industry participants to efforts to keep the alligator market secure and competitive.

"This is an opportunity for LDWF to support an industry that is a vital part of the Louisiana economy," said LDWF Secretary Jack Montoucet, a former alligator farmer. "They're not asking to reduce the tag fee permanently, only for two years. This will provide the alligator industry with the resources needed to make sure they are able to continue to do business globally."

Louisiana's alligator population continues to thrive since it was threatened in the 1960s and 1970s. Estimates had the population at a low of about 100,000 in Louisiana in 1963. Today, that number is about two million in the wild in Louisiana. There are an estimated 300,000 more on alligator farms in Louisiana. The alligator was removed from the Endangered Species List in 1987.

The primary reason for the rebound in Louisiana was LDWF's sustainable use Marsh to Market program, which continues today. When consumers buy alligator products they are actually helping the species to flourish in Louisiana. Much of the money derived from purchasing alligator products goes back into LDWF's alligator program, which benefits not only the animal but also the coastal habitat where it dwells.

To see the full NOI, go to <http://www.wlf.louisiana.gov/action-items>.

2020 Louisiana Fisheries Forward Summit: SAVE THE DATE!

Join us at the Louisiana Fisheries Forward Summit on March 11, 2020, at the Pontchartrain Center in Kenner.

Catch up on what's new in the industry with hands-on demonstrations and an open trade show that will help all participants connect with the changing world of seafood. Produced by Louisiana Sea Grant, LSU AgCenter and the Louisiana Department of Wildlife and Fisheries – with their industry partners – it is part of the Louisiana Fisheries Forward (LFF) education initiative. This free event will include lunch (with advance registration).

Register as a participant (fisherman or processor) or vendor by clicking one of the links below.

Participants: www.lafisheriesforward.org/summit/summit-participant-registration/

Vendors: www.lafisheriesforward.org/summit/summit-vendor-registration/

LOUISIANA Fisheries Forward
SUMMIT 2020

Save The Date
WEDNESDAY, MARCH 11
— AT —
The Pontchartrain Center
4545 Williams Blvd, Kenner, LA 70065

More information will be available online,
at LaFisheriesForward.org/Summit

As the Gulf South's premier
fisheries event, featuring trade
show and hands-on demonstrations,
we invite you to join us in 2020.

LOUISIANA
FISHERIES FORWARD
Advancing Our Seafood Industry

Visit the
Beyond the Boat Pavillion,
a special expo for micro-processors!

Six Crab Trap Closures Along Louisiana Coast for Derelict Crab Trap Collection

Since 2004, LDWF, together with individual volunteers and organizations including Louisiana Sea Grant, has successfully removed and disposed of more than 41,000 abandoned and derelict crab traps. The removal of these crab traps is especially important to boating safety and crab harvesting efforts.

The efforts and successes of the derelict crab trap program speak for themselves, with the removal of nearly 13,800 derelict traps over the past three years. With the continued success of this program, the Louisiana Wildlife and Fisheries Commission and LDWF has scheduled six closure areas in 2020.

The LWFC adopted a Notice of Intent allowing the removal of derelict crab traps along Louisiana's coast in 2020 from the following six areas:

1. The first closure will take place in Lake Pontchartrain, east of the Lake Pontchartrain Causeway Bridge, from midnight Monday, Feb. 3, 2020, through 11:59 p.m. Sunday, Feb. 16, 2020.
2. The second closure will take place in the upper Barataria Basin, in an area from Lafitte to Little Lake, from midnight Monday, Feb. 3, 2020, through 11:59 p.m. Sunday, Feb. 16, 2020.
3. The third closure will take place in the Calcasieu Basin, in the lower portion of Calcasieu Lake, from midnight Monday, Feb. 10, 2020, through 11:59 p.m. Wednesday, Feb. 19, 2020.

4. The fourth closure will take place in the Vermilion-Teche Basin, in the western portion of Vermilion Bay, from midnight Monday, Feb. 10, 2020, through 11:59 p.m. Sunday, Feb. 23, 2020.

5. The fifth closure will take place in the Pontchartrain Basin, Lake Borgne, from midnight Monday, March 2, 2020, through 11:59 p.m. Sunday, March 15, 2020.

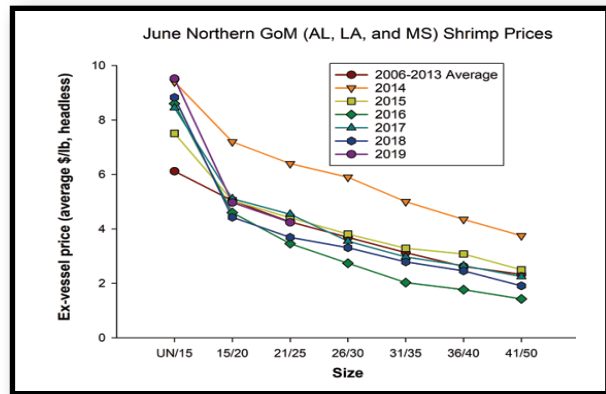
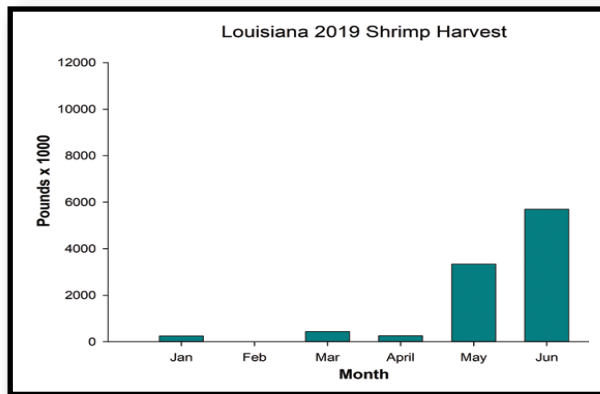
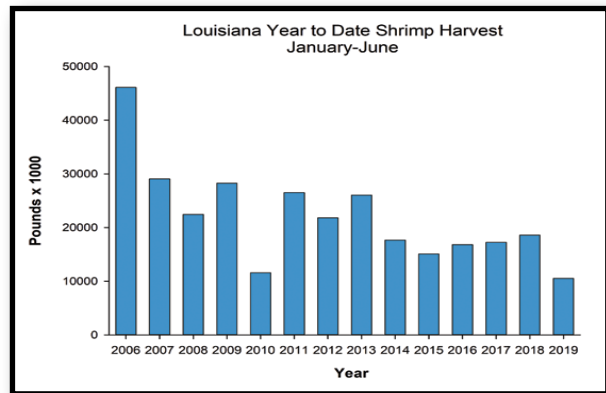
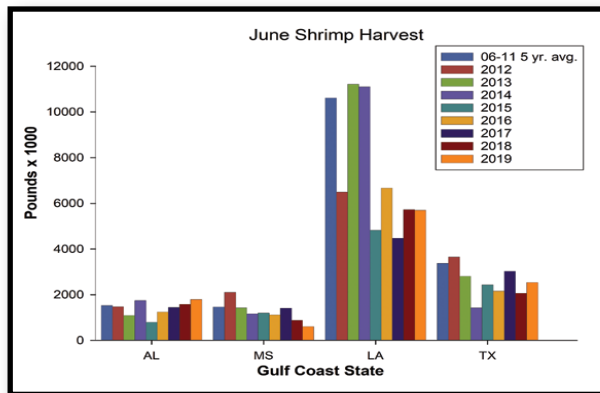
6. The sixth closure will take place in the Terrebonne Basin, within an area between Bayou Pointe Aux Chenes and Bayou Terrebonne, from midnight Monday, March 2, 2020, through 11:59 p.m. Sunday, March 15, 2020.

The closure areas are described in further detail below. Maps of the designated closure areas are available

<http://www.wlf.louisiana.gov/fishing/derelict-crab-trap-removal>.

Louisiana Shrimp Watch

Louisiana specific data portrayed in the graphics are selected from preliminary data posted by NOAA on its website. All data portrayed are subject to final revision and approval by NOAA. Shrimp landings are ex-vessel prices, inclusive of all species harvested. Missing, inadequate or withheld reports are portrayed as “zero” in these graphics. Price graphics reflect central Gulf states only (Texas and Florida are reported independently). For more information, please refer to: www.st.nmfs.noaa.gov/st1/market_news/index.html.



THE GUMBO POT

CATFISH PARMESAN*

Recipe courtesy of *Louisiana Kitchen & Culture*.

For more recipes or to subscribe to their magazine or free newsletter, please visit <http://louisiana.kitchenandculture.com/>



Ingredients:

- 2 1/2 lbs catfish fillets
- 1 cup breadcrumbs
- 3/4 cup Parmesan cheese, freshly grated
- 1 teaspoon paprika
- 1/2 teaspoon dried oregano
- 1/4 teaspoon dried basil
- 1/2 teaspoon black pepper
- 2 tablespoon unsalted butter, melted
- 1 lemon, cut in wedges
- 1/4 cup fresh parsley, chopped

Method:

Preheat oven to 375°F.

Pat fish dry. Combine bread crumbs, cheese, and seasonings; mix well. Dip catfish in melted butter and roll in the crumb mixture. Arrange fish on a baking sheet sprayed with nonstick vegetable oil spray. Bake for about 25 minutes or until fish flakes easily when tested with a fork.

Garnish with lemon wedges and parsley. Serve hot.

*Serves 6

Be sure to visit the *Lagniappe* blog for additional news and timely events between issues.
<https://louisianalagniappe.wordpress.com/>

Lagniappe Fisheries Newsletter

Editor: Julie Lively

Web coordinator: Melissa Castleberry

Copy editor: Roy Kron



For more information, contact your local extension agent:

Thu Bui

Assistant Extension Agent, Fisheries
St. Mary, Iberia, and Vermilion Parishes
Phone: (337) 828-4100, ext. 300
tbui@agcenter.lsu.edu

Nicole Lundberg

Area Agent – Fisheries/Natural Resources
Lafourche and Terrebonne Parishes
Phone: (985) 873-6495
nlundberg@agcenter.lsu.edu

Carol D. Franze

Marine Agent
Southeast Region
Phone: (985) 875-2635
cfranze@agcenter.lsu.edu

Kevin Savoie

Area Agent (Southwest Region)
Natural Resources-Fisheries
Phone: (337) 475-8812
ksavoie@agcenter.lsu.edu

Albert 'Rusty' Gaudé

Area Agent, Fisheries
Jefferson, Orleans, St. Charles and St. John Parishes
Phone: (504) 433-3664
agaude@agcenter.lsu.edu

Dominique Seibert

Area Agent - Coastal Advisor
Plaquemines and St. Bernard Parishes
Phone: (504) 433-3664
dseibert@agcenter.lsu.edu

Thomas Hymel

Watershed Educator
Iberia, St. Martin, Lafayette, Vermilion,
St. Landry, & Avoyelles Parishes
Phone: (337) 276-5527
thymel@agcenter.lsu.edu

Mark Shirley

Area Agent (Aquaculture & Coastal Resources)
Jefferson Davis, Vermilion, Acadia, St. Landry,
Evangeline, Cameron, Calcasieu, Lafayette,
Beauregard, & Allen Parishes
Phone: (337) 898-4335
mshirley@agcenter.lsu.edu

We would like to hear from you! Please contact us regarding fishery questions, comments or concerns you would like to see covered in the Lagniappe. Anyone interested in submitting information, such as articles, editorials or photographs pertaining to fishing or fisheries management is encouraged to do so.

Please contact Lagniappe editor Julie Lively at janderson@agcenter.lsu.edu

Julie A. Lively

Associate Professor
LSU Agcenter & Louisiana Sea Grant
114 RNR Building
Baton Rouge, LA 70803
Phone: 225-578-0771
Fax: 225-578-4227
janderson@agcenter.lsu.edu