



## 2020 Legislative Session Fishery Related Bills

The following are brief summaries of legislative bills that came out of the regular or extraordinary session related to fisheries in Louisiana. Additional information on all of these bills can be found here: <https://www.legis.la.gov/legis/BillSearch.aspx?sid=LAST>

### 2020 FIRST EXTRAORDINARY SESSION

**HCR16:** Bourriaque. Sent to the Secretary of State. Memorializes Congress and the Louisiana congressional delegation to clarify the eligibility of freshwater fisheries impacted by the COVID-19 pandemic to receive CARES Act dollars.

**HR24:** Wheat. Sent to the Secretary of State. Urges and requests the Coastal Protection and Restoration Authority (CPRA) to work with the Department of Wildlife and Fisheries (LDWF) to develop integrated coastal protection projects aimed at preserving and maintaining healthy estuarine and essential fish habitat in and around Lake Pontchartrain.

### 2020 REGULAR SESSION

Bills signed by the Governor or sent to the Secretary of State:

**HB143:** Coussan. Signed by the Governor - Act 22. Re-creates the Louisiana Department of Wildlife and Fisheries (LDWF).

**HB246:** Coussan. Signed by the Governor - Act 178. Authorizes the secretary of LDWF to certify “organizations involved in charitable hunting and fishing activities” and waives license fees for such organizations.

**HB411:** Riser. Signed by the Governor - Act 190. Provides relative to hunting and fishing license fees for Purple Heart recipients, regardless of residency, to pay resident rate.

**HB461:** Zeringue. Signed by the Governor - Act 85. Provides relative to a property exchange between LDWF and the United States Fish and Wildlife Service.

**HCR61:** Riser. Sent to the Secretary of State. Urges and requests LDWF to review the restrictions on possession of exotic and invasive species to include members of the monitor lizard family, other invasive lizard species, and any other potentially invasive species that originate in other parts of the world with a similar climate and habitat to that of Louisiana.

**SCR56:** Hewitt. Sent to the Secretary of State. Requests CPRA and LDWF to cooperate in developing projects and programs to enhance the oyster industry.

**SR30:** Smith. Sent to the Secretary of State. To urge and request LDWF to study the use of bowfishing in Louisiana.

### Bills that never left committee:

**HB351:** Bourriaque. Pending House Natural Resources. Changes the date LDWF may allow for the taking of gulf bait menhaden when the quota has not been met.

**HB796:** Kerner. Pending House Natural Resources. Requires that mitigation funding associated with the Mid-Barataria Sediment Diversion project be used to compensate commercial fishermen for losses associated with that project.

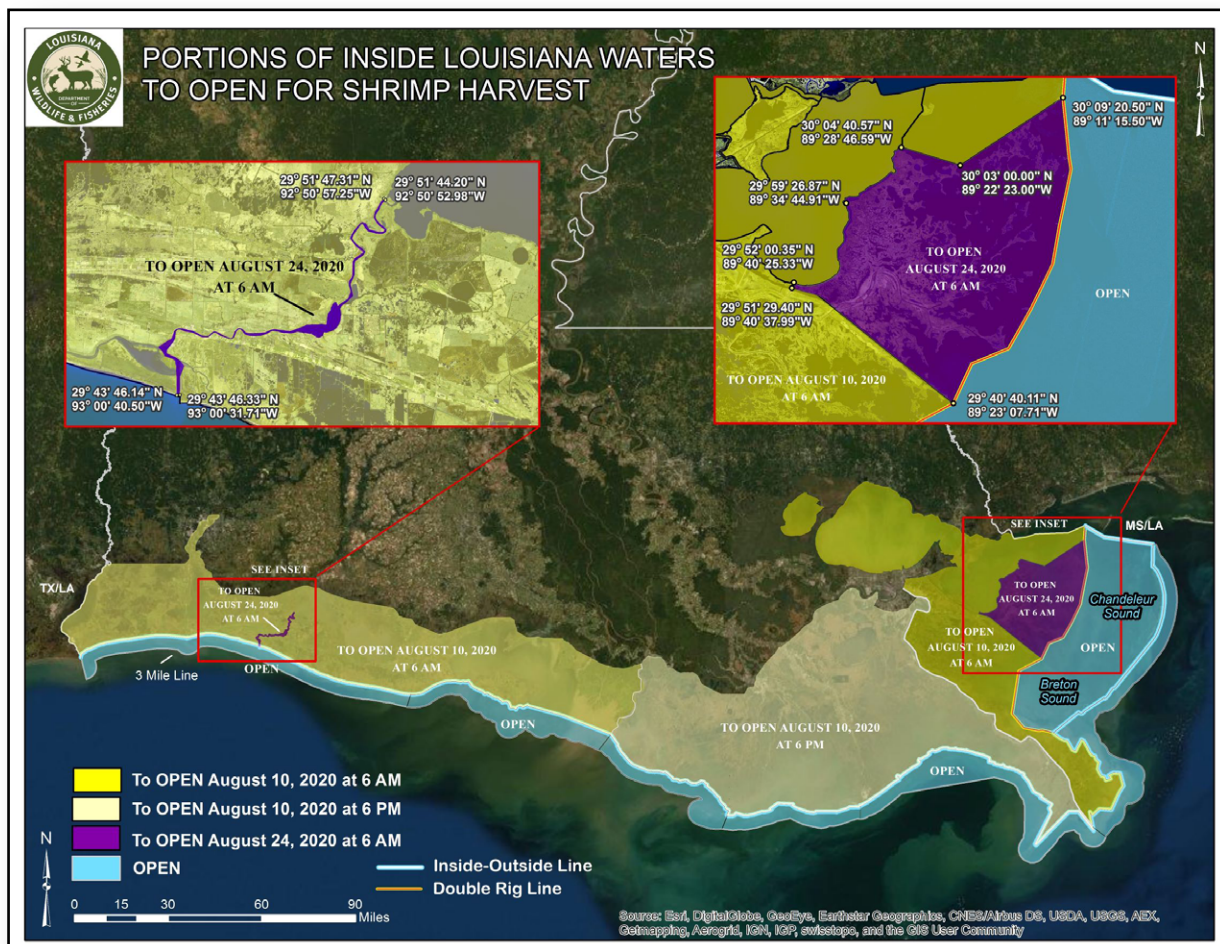
**HB433:** Cormier. Pending House Natural Resources. Reduces the oyster seed ground vessel permit fee and creates associated gear fees.

– Julie Lively

## Fall Inshore Shrimp Season

Season openings are as follows:

- From the Mississippi/Louisiana state line westward to the eastern shore of South Pass of the Mississippi River to open at 6 a.m. Aug. 10, 2020, except for the area as described below which will open at 6 a.m. Aug. 24, 2020:
  - o From a point at the intersection of the eastern shore of the MRGO and the Shell Beach Cut at 29 degrees 51 minutes 29.40 seconds north latitude, 89 degrees 40 minutes 37.99 seconds west longitude; thence northerly to a point where Shell Beach Cut and the south shore of Lake Borgne intersect (29 degrees 52 minutes 00.35 seconds north latitude, 89 degrees 40 minutes 25.33 seconds west longitude); thence easterly and northerly following the southern shore of Lake Borgne and the western shore of the Biloxi Marsh to Pointe Aux Marchettes (29 degrees 59 minutes 26.87 seconds north latitude, 89 degrees 34 minutes 44.91 seconds west longitude); thence north-easterly to Malheureux Point (30 degrees 04 minutes 40.57 seconds north latitude, 89 degrees 28 minutes 46.59 seconds west longitude); thence southeasterly to a point on the western shore of Three-Mile Pass (30 degrees 03 minutes 00.00 seconds north latitude, 89 degrees 22 minutes 23.00 seconds west longitude); thence northeasterly to a point on Isle Au Pitre (30 degrees 09 minutes 20.50 seconds north latitude, 89 degrees 11 minutes 15.50 seconds west longitude), which is a point on the double-rig line as described in R.S. 56:495.1(A)2; thence southerly following the double rig line to where it intersects with the MRGO (29 degrees 40 minutes 40.11 seconds north latitude, 89 degrees 23 minutes 07.71 seconds west longitude); thence northwesterly along the eastern shore of the MRGO to the point of origin.
- From the eastern shore of South Pass of the Mississippi River westward to the Atchafalaya River Ship Channel at Eugene Island as delineated by the red Channel Buoy Line to open at 6 p.m. Aug. 10, 2020.
- From the Atchafalaya River Ship Channel at Eugene Island as delineated by the red Channel Buoy Line westward to the Louisiana/Texas state line to open at 6 a.m. Aug. 10, 2020 except for the area as described below which will open at 6 a.m. Aug. 24, 2020:
  - o From a point on the shrimp inside/outside line and the western shore of the Mermentau River at 29 degrees 43 minutes 46.14 seconds north latitude, 93 degrees 00 minutes 40.50 seconds west longitude; thence northerly following the western shore of the Mermentau River to its intersection with Catfish Locks 29 degrees 52 minutes 47.31 seconds north latitude, 92 degrees 50 minutes 57.25 seconds west longitude; thence southeasterly following Catfish Locks to its intersection with the eastern shore of the Mermentau River (29 degrees 51 minutes 44.20 seconds north latitude, 92 degrees 50 minutes 52.98 seconds west longitude); thence southerly following the eastern shore of the Mermentau River to the point where it intersects the shrimp inside/outside line (29 degrees 43 minutes 46.33 seconds north latitude, 93 degrees 00 minutes 31.71 seconds west longitude); thence westerly along the shrimp inside/outside line to the point of origin.





LDWF biologists have monitored hydrological parameters and conducted trawl samples throughout the state's estuarine and nearshore waters to develop recommendations for the opening of the fall shrimp season. These results were used to calculate a date when white shrimp will reach marketable size.

The Louisiana Wildlife and Fisheries Commission granted authority to the LDWF Secretary to delay or advance these opening dates and to close any portion of Louisiana inside waters to protect small, juvenile white shrimp if biological and technical data indicate the need to do so, or if enforcement problems develop. The Commission also granted authority to the Secretary to close shrimping in all or portions of state outside waters if significant numbers of small, sub-legal size white shrimp are found in biological samples, and authority to reopen any area closed to shrimping when the closure is no longer necessary. Notice of any opening, delay or closing of a season by the Secretary will be made public at least 72 hours prior to such action.

### ***White Shrimp Count Reminder***

R.S. 56:498 provides that the possession count on saltwater white shrimp for each cargo lot shall average no more than 100 (whole specimens) per pound except during the time period from October 15 through the third Monday in December.

## **Checklist for Seafood Processing Worksites: Align Your COVID-19 Assessment and Control Plan with CDC/OSHA Worker Protection Guidance**

This checklist is intended to help seafood processing worksites implement CDC/OSHA interim guidance while operating during the COVID-19 pandemic and safeguarding workers and the community. It can be used to reassess, update and modify a worksite's assessment and control plan regularly or as conditions change.

This PDF checklist can be found on the CDC COVID-19 Communities, Schools & Workplaces website:  
[www.cdc.gov/coronavirus/2019-ncov/community/pdf/Seafood-checklist-covid.pdf](http://www.cdc.gov/coronavirus/2019-ncov/community/pdf/Seafood-checklist-covid.pdf).

## **Tow Time Regulations Reminder**

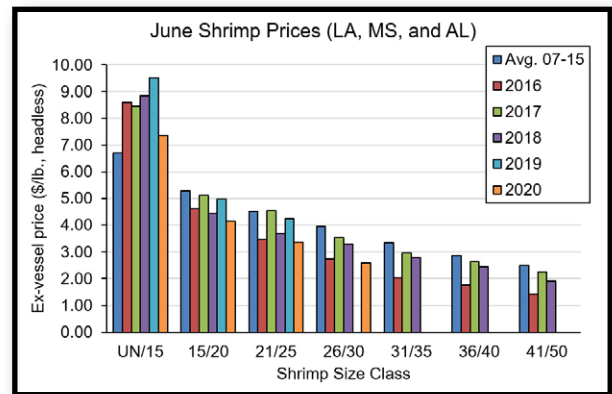
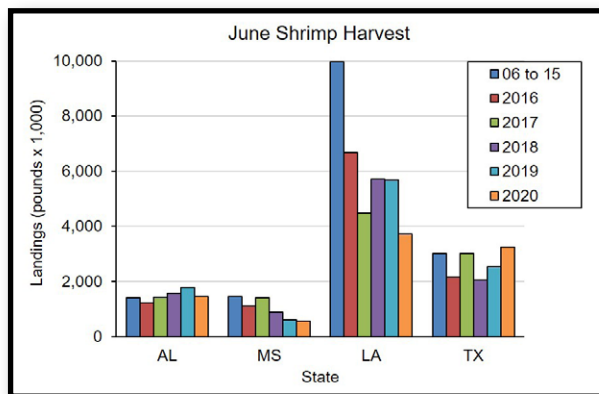
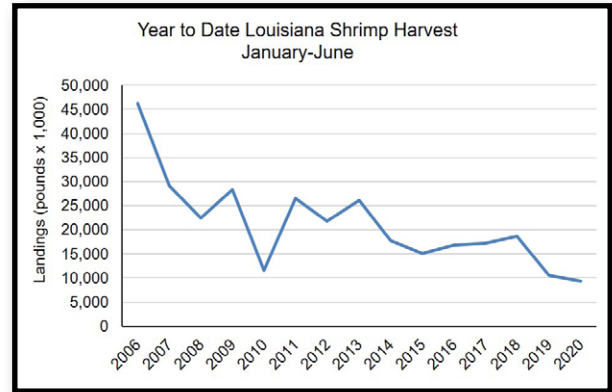
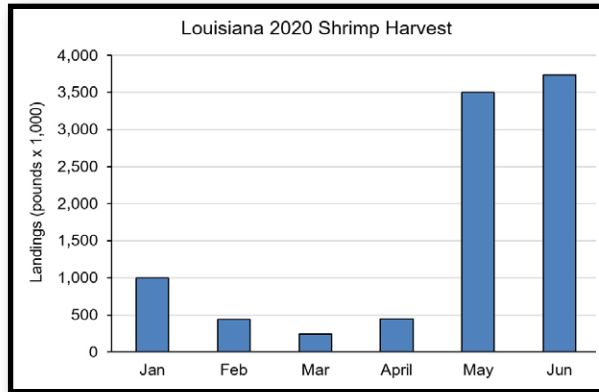
Federal Turtle Excluder Device (TED) regulations require skimmer net fishermen to limit tow times. Maximum tow times are 55 minutes from April 1 to Oct. 31 and increase to 75 minutes from Nov. 1 to March 31.



## Louisiana Shrimp Watch

Louisiana specific data portrayed in the graphics are selected from preliminary data posted by NOAA on its website. All data portrayed are subject to final revision and approval by NOAA. Shrimp landings are ex-vessel prices, inclusive of all species harvested. Missing, inadequate or withheld reports are portrayed as “zero” in these graphics. Price graphics reflect central Gulf states only (Texas and Florida are reported independently).

For more information, please refer to: [www.st.nmfs.noaa.gov/st1/market\\_news/index.html](http://www.st.nmfs.noaa.gov/st1/market_news/index.html).



## Chad Hebert Selected to Lead LDWF Enforcement Division

Lt. Col. Chad Hebert, a 27-year veteran at LDWF, will lead its Enforcement Division. Hebert, 48, promoted to the rank of Colonel, replaces Col. Sammy Martin, who announced his retirement this month. Hebert takes over immediately. He will oversee a staff of 257, including enforcement agents and supporting staff.

## Important Dates & Upcoming Events

August 24-28, 2020: Gulf Council to Meet by Webinar. <https://gulfcouncil.org/meetings/council/>

# **THE GUMBO POT**

## **BEER-BATTERED CATFISH**

Recipe courtesy of *Louisiana Kitchen & Culture*.

For more recipes or to subscribe to their magazine or free newsletter, please visit <http://louisiana.kitchenandculture.com/>.



### **Ingredients:**

1 tablespoon vegetable oil plus additional oil for frying  
 1/3 cup plus 2 tablespoons all-purpose flour  
 1/2 teaspoon salt  
 1/4 teaspoon ground black pepper  
 1/3 cup beer, allow to go flat  
 2 (4 to 6 ounce) catfish fillets

### **Method:**

Whisk 1/3 cup of flour, salt and pepper in a bowl to blend. Whisk in beer to make the batter.

Add enough vegetable oil to a large skillet to reach a 1/2-inch depth. Place remaining 2 tablespoons flour on a plate. Coat fish in flour then dip in batter, letting excess drip off. Add fish to hot oil and fry until golden brown and crisp, about 4 minutes per side.

Transfer fish to paper towel to dry (both sides).

Serve with your favorite slaw or potato salad recipe.

Be sure to visit the *Lagniappe* blog for additional news and timely events between issues.  
<https://louisianalagniappe.wordpress.com/>

## **Lagniappe Fisheries Newsletter**

Editor: Julie Lively

Web coordinator: Melissa Castleberry

Copy editor: Roy Kron



## For more information, contact your local extension agent:

### **Thu Bui**

Assistant Extension Agent, Fisheries  
St. Mary, Iberia, and Vermilion Parishes  
Phone: (337) 828-4100, ext. 300  
[tbui@agcenter.lsu.edu](mailto:tbui@agcenter.lsu.edu)

### **Nicole Lundberg**

Area Agent – Fisheries/Natural Resources  
Lafourche and Terrebonne Parishes  
Phone: (985) 873-6495  
[nlundberg@agcenter.lsu.edu](mailto:nlundberg@agcenter.lsu.edu)

### **Carol D. Franze**

Marine Agent  
Southeast Region  
Phone: (985) 875-2635  
[cfranze@agcenter.lsu.edu](mailto:cfranze@agcenter.lsu.edu)

### **Kevin Savoie**

Area Agent (Southwest Region)  
Natural Resources-Fisheries  
Phone: (337) 475-8812  
[ksavoie@agcenter.lsu.edu](mailto:ksavoie@agcenter.lsu.edu)

### **Albert 'Rusty' Gaudé**

Area Agent, Fisheries  
Jefferson, Orleans, St. Charles and St. John Parishes  
Phone: (504) 433-3664  
[agaude@agcenter.lsu.edu](mailto:agaude@agcenter.lsu.edu)

### **Dominique Seibert**

Area Agent - Coastal Advisor  
Plaquemines and St. Bernard Parishes  
Phone: (504) 433-3664  
[dseibert@agcenter.lsu.edu](mailto:dseibert@agcenter.lsu.edu)

### **Thomas Hymel**

Watershed Educator  
Iberia, St. Martin, Lafayette, Vermilion,  
St. Landry, & Avoyelles Parishes  
Phone: (337) 276-5527  
[thymel@agcenter.lsu.edu](mailto:thymel@agcenter.lsu.edu)

### **Mark Shirley**

Area Agent (Aquaculture & Coastal Resources)  
Jefferson Davis, Vermilion, Acadia, St. Landry,  
Evangeline, Cameron, Calcasieu, Lafayette,  
Beauregard, & Allen Parishes  
Phone: (337) 898-4335  
[mshirley@agcenter.lsu.edu](mailto:mshirley@agcenter.lsu.edu)

We would like to hear from you! Please contact us regarding fishery questions, comments or concerns you would like to see covered in the Lagniappe. Anyone interested in submitting information, such as articles, editorials or photographs pertaining to fishing or fisheries management is encouraged to do so.

**Please contact Lagniappe editor Julie Lively at [janderson@agcenter.lsu.edu](mailto:janderson@agcenter.lsu.edu)**

### **Julie A. Lively**

Associate Professor  
LSU Agcenter & Louisiana Sea Grant  
114 RNR Building  
Baton Rouge, LA 70803  
Phone: 225-578-0771  
Fax: 225-578-4227  
[janderson@agcenter.lsu.edu](mailto:janderson@agcenter.lsu.edu)