



Understanding Louisiana's Path to a Federal Fisheries Disaster Declaration

Louisiana Gov. John Bel Edwards submitted a request to the U.S. Department of Commerce in June notifying the federal government that Louisiana's fisheries are in a dire situation due to the extreme duration of high river levels. This year (2019) has been the wettest year on record in the Mississippi River Valley in the last 124 years.

This has resulted in an historic high water event on the Mississippi River and an overwhelming influx of freshwater into the state's coastal areas for an extremely long period of time.

In order for a fisheries disaster declaration to be put in place, a specific protocol must be followed involving multiple government agencies including the Louisiana Department of Wildlife and Fisheries (LDWF), Governor's office, U.S. Department of Commerce, NOAA Fisheries and Congress. The decision regarding who will qualify for assistance or when assistance will be available (if a fishery disaster is declared) will not be made by LDWF, rather by NOAA and Congress after a disaster is declared.

In addition to the Governor's request, the following requirements must be met in order for Louisiana to qualify for fisheries disaster assistance:

1. Fishery Sampling – LDWF has aggressively sampled commercially and recreationally important fishery species in all basins throughout the coast to document impacts and will continue to do so throughout this flooding event. After the event is over, sampling of stocks by LDWF biologists, and monitoring of landings and effort from commercial and recreational fisheries will continue.

2. Develop Impact Statement – LDWF will utilize the collected biological monitoring data, as well as commercial and recreational landings data, to prepare an overall impact assessment. This full assessment will include all of Louisiana's commercial and recreational species, throughout all basins along the coast, and all sectors of the fishing community. A full assessment will not be complete for several months, as we are still in the midst of this historic flood event. Submitting the impact statement too early may jeopardize our potential for maximum assistance.

3. NOAA Assessment – The impact assessment will be used, if data show a significant impact, as part of the application to the U.S. Department of Commerce and the National Oceanic and Atmospheric Administration for a declaration of a federal fisheries disaster. The application could include all the various species, basins and fishing industry sectors for which an impact can be documented.

4. Funding Appropriated – If NOAA concurs with the Louisiana application, they will provide their concurrence to Congress for consideration. Congress has the authority to act on their own to appropriate assistance for a fishery disaster but typically relies on a decision by NOAA.

Frequently asked questions regarding fishery disaster assistance, including who may qualify, can be found at www.fisheries.noaa.gov/insight/frequent-questions-fishery-disaster-assistance

A quick reference sheet of the fishery disaster assistance process produced by Louisiana Sea Grant is here: www.wlf.louisiana.gov/news/42919

Commercial Shrimp Bycatch Study Sign-Up Extended

LDWF has extended the sign-up date indefinitely for its commercial shrimp bycatch study. To ensure the study's success, participation from a wide range of commercial shrimpers from each major basin and who utilize all major types of gear are needed.

The study was requested by the shrimp industry to assist in its pursuit of a sustainability certification. The study characterizes bycatch data during commercial shrimping trips throughout state waters. Bycatch data is one of the major components necessary to fulfill the requirements of a sustainability certification.

LDWF has partnered with LGL Limited to conduct the study. Through this partnership, LGL Limited staff will ride along with commercial shrimp vessels for observation. Commercial fishermen will retain all shrimp and other commercial harvest sampled onboard their vessel. The remainder of the catch will either be processed onboard or held for later processing, depending on conditions.

The department will provide LGL Limited staff with the names and contact information of participating fishermen to schedule a trip during the assigned time period. Trips have been predetermined based on historical effort by basin, gear and season.

Participating fishermen randomly drawn for each 48-hour trip will receive \$350 per day or \$700 per completed trip.

To register, visit <https://fs30.formsite.com/Jfroeba/form86/index.html>.

Gulf Council Recommends a New Commercial Trip Limit for Greater Amberjack

The Gulf of Mexico Fishery Management Council took final action on a Framework amendment that considers reducing the commercial trip limit for greater amberjack. The council decided to reduce the trip limit to 1,000 pounds gutted weight. When 75 percent of the annual catch target is met, the trip limit will step down to 250 pounds. The total allowable harvest of greater amberjack remains unaffected, and the commercial sector is still expected to harvest its entire annual catch limit.

Public comment indicated that some fishermen want to maintain a higher trip limit to allow for directed greater amberjack trips. Some fishermen supported lower trip limits because they consider amberjack a bycatch species, and prefer that the season remain open as long as possible. Lowering the trip limit is expected to extend the fishing season. This will reduce discards and maintain a consistent market supply.

The council will submit this proposed regulation change to the U.S. Secretary of Commerce for approval and implementation.

Un-designation of a Portion of Public Oyster Seed Grounds Finalized

A rule to un-designate a portion of the Public Oyster Seed Grounds east of the Mississippi River has been finalized by publication in the Louisiana State Register. This action will not become effective until the first lottery phase of the oyster moratorium lifting process commences.

Lifting the long-standing oyster lease moratorium and turning some public oyster grounds into leasable areas is part of an ongoing effort by the state to assist the oyster industry in adapting to changing coastal conditions. Gov. Edwards challenged both LDWF and the Coastal Restoration and Protection Authority (CPRA) to find ways to help the fishing industries of Louisiana identify options to remain viable. Providing oyster producers with an opportunity to develop productive reefs in new areas is one such option identified as an available adaptation strategy.

“The state is giving up these public oyster seed grounds to help provide the oyster industry with an opportunity to move to more productive areas – to adapt to both natural and man-made changes in coastal Louisiana, including erosion and shifting salinity levels,” explained LDWF Assistant Secretary Patrick Banks. “With over 1.7 million acres of public oyster grounds, the state does not have the resources to develop oyster reefs everywhere. One of the best things we can do is make this area available for private investment through our oyster leasing process.”

Approximately 40,248 acres of the public grounds in Bay Eloi and northern Breton Sound will no longer be designated as an oyster seed ground upon commencement of the first lottery phase of the oyster moratorium lifting process (also described as Phase Four of Section 2 of Act 595 of the 2016 Regular Session of the Legislature). This acreage only consists of 4 percent of the Public Oyster Seed Ground area east of the Mississippi River.

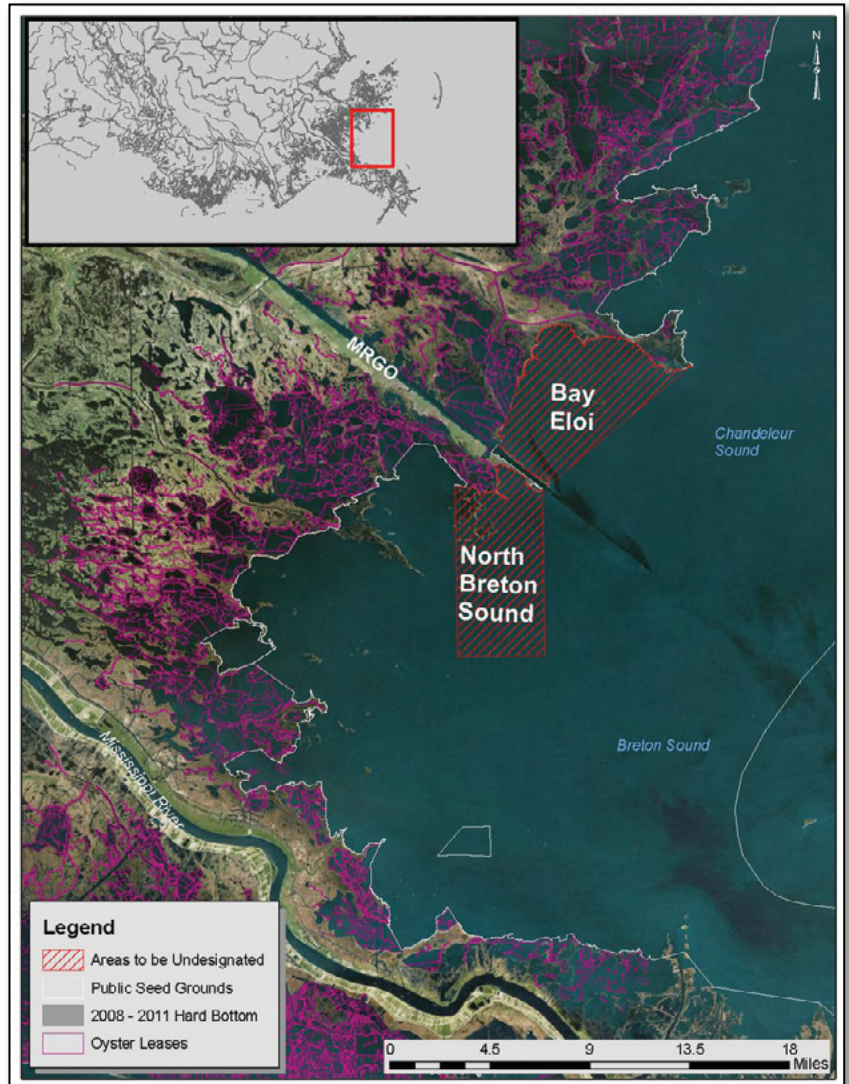
The area is described below:

a. North Breton Sound

- i. 89 degrees 24 minutes 00.000 seconds W
29 degrees 41 minutes 00.468 seconds N;
- ii. 89 degrees 24 minutes 00.000 seconds W
29 degrees 34 minutes 30.000 seconds N;
- iii. 89 degrees 27 minutes 56.000 seconds W
29 degrees 34 minutes 30.000 seconds N;
- iv. 89 degrees 27 minutes 56.000 seconds W
29 degrees 41 minutes 12.400 seconds N;
- v. following the current public oyster seed ground
boundary line and shorelines back to point of beginning.

b. Bay Eloi

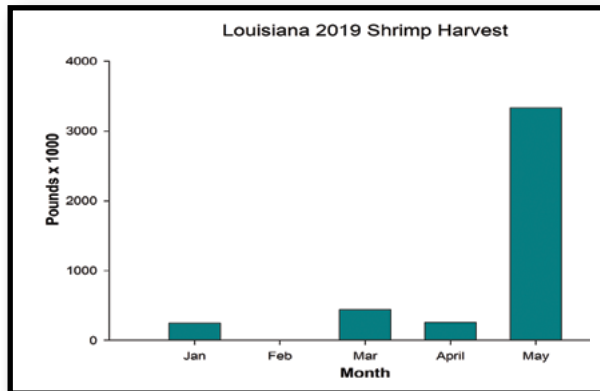
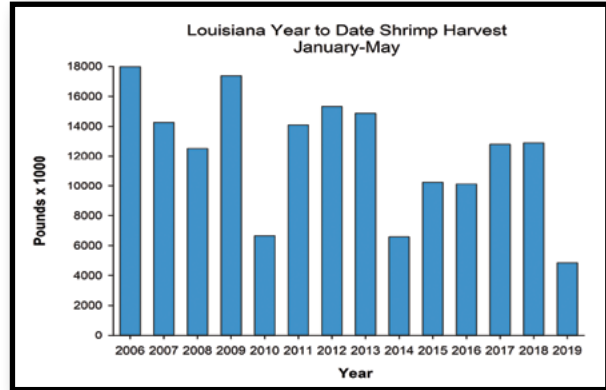
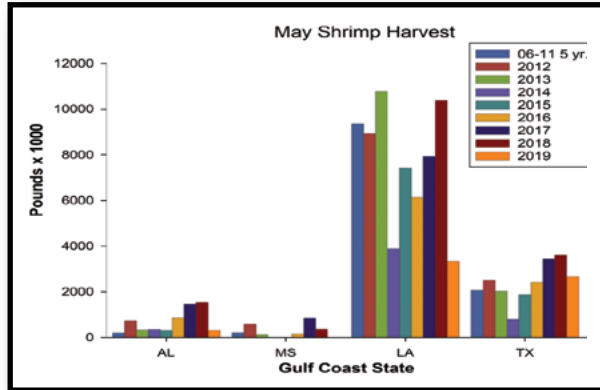
- i. 89 degrees 17 minutes 12.190 seconds W
29 degrees 45 minutes 49.160 seconds N;
- ii. 89 degrees 23 minutes 46.500 seconds W
29 degrees 41 minutes 09.948 seconds N;
- iii. following the current public oyster seed ground
boundary line and shorelines back to point of beginning.



Louisiana Shrimp Watch

This month, for the first time, NOAA was unable to report price data due to lack of data.

Louisiana specific data portrayed in the graphics are selected from preliminary data posted by NOAA on its website. All data portrayed are subject to final revision and approval by NOAA. Shrimp landings are ex-vessel prices, inclusive of all species harvested. Missing, inadequate or withheld reports are portrayed as “zero” in these graphics. For more information, please refer to: www.st.nmfs.noaa.gov/st1/market_news/index.html



Important Dates & Upcoming Events

July 29: Sanitation Control Procedures for Fish and Fisheries Products, 212 Efferson Hall, Baton Rouge

July 30 – Aug 1: Basic Seafood HACCP, 212 Efferson Hall, Baton Rouge

July 31: Shrimp Task Force, Terrebonne Council Meeting Room, 8026 Main Street, Houma, 10:00 am

Aug 3: Great American Seafood Cookoff, New Orleans Convention Center, 10:00 am

Aug 6: Crab Task Force, St. Bernard Port and Harbor Terminal, Chalmette, 1:00pm

Aug 12 – 15: Gulf of Mexico Fishery Management Council Meeting, Hyatt Centric French Quarter, 800 Iberville St., New Orleans

Aug 21: CPRA, Louisiana State Capitol, House Committee Room 5, 9:30am

Aug 27 – 29: Meat and Poultry HACCP, 212 Efferson Hall, Baton Rouge

THE GUMBO POT

FRIED GREEN TOMATOES WITH TASSO TARTAR AND BLUE CRAB

Recipe courtesy of *Louisiana Kitchen & Culture*.

For more recipes or to subscribe to their magazine or free newsletter, please visit <http://louisiana.kitchenandculture.com/>



APPETIZERS

Recipe courtesy of Chef Manny Augello, Jolie Bistro, Lafayette
Serves 6 to 8

Ingredients:

vegetable oil for frying
2 green tomatoes, peeled, slices 1/4-inch thick
1 tablespoon Creole seasoning
1 cup flour seasoned with 2 teaspoons Creole seasoning
1 cup Panko bread crumbs
2 eggs beaten with 1 cup milk
Tasso Tartar I (recipe follows)
1-pound jumbo lump Louisiana crab meat

Tasso Tartar:

3 ounces tasso ham, chopped
1/2 cup chopped shallot
1/4 cup chopped red onion
2 tablespoons chopped celery
juice of 1 lemon
1 clove garlic, crushed
1 cup mayonnaise
pinch cayenne
1 teaspoon Creole mustard
pinch sugar
pinch kosher salt

Method:

Heat oil to 350°F. Sprinkle tomato slices with Creole seasoning. Coat with seasoned flour, then egg wash, then panko. Fry in vegetable oil until golden, turning once. Drain on paper towels.

Tasso Tartar:

Place tasso, vegetables, lemon juice, and garlic in a food processor; process until smooth. Scrape mixture into a small mixing bowl; fold in mayonnaise, cayenne, mustard, sugar, and salt. Makes 2 cups.

To serve top each round of tomato with crab salad, drizzle with tartare.

Be sure to visit the *Lagniappe* blog for additional news and timely events between issues.
<https://louisianalagniappe.wordpress.com/>

Lagniappe Fisheries Newsletter

Editor: Julie Lively

Web coordinator: Melissa Castleberry

Copy editor: Roy Kron



For more information, contact your local extension agent:

Thu Bui

Assistant Extension Agent, Fisheries
St. Mary, Iberia, and Vermilion Parishes
Phone: (337) 828-4100, ext. 300
tbui@agcenter.lsu.edu

Nicole Lundberg

Area Agent – Fisheries/Natural Resources
Lafourche and Terrebonne Parishes
Phone: (985) 873-6495
nlundberg@agcenter.lsu.edu

Carol D. Franze

Marine Agent
Southeast Region
Phone: (985) 875-2635
cfranze@agcenter.lsu.edu

Kevin Savoie

Area Agent (Southwest Region)
Natural Resources-Fisheries
Phone: (337) 475-8812
ksavoie@agcenter.lsu.edu

Albert ‘Rusty’ Gaudé

Area Agent, Fisheries
Jefferson, Orleans, St. Charles and St. John Parishes
Phone: (504) 433-3664
agaude@agcenter.lsu.edu

Dominique Seibert

Area Agent - Coastal Advisor
Plaquemines and St. Bernard Parishes
Phone: (504) 433-3664
dseibert@agcenter.lsu.edu

Thomas Hymel

Watershed Educator
Iberia, St. Martin, Lafayette, Vermilion,
St. Landry, & Avoyelles Parishes
Phone: (337) 276-5527
thymel@agcenter.lsu.edu

Mark Shirley

Area Agent (Aquaculture & Coastal Resources)
Jefferson Davis, Vermilion, Acadia, St. Landry,
Evangeline, Cameron, Calcasieu, Lafayette,
Beauregard, & Allen Parishes
Phone: (337) 898-4335
mshirley@agcenter.lsu.edu

We would like to hear from you! Please contact us regarding fishery questions, comments or concerns you would like to see covered in the Lagniappe. Anyone interested in submitting information, such as articles, editorials or photographs pertaining to fishing or fisheries management is encouraged to do so.

Please contact Lagniappe editor Julie Lively at janderson@agcenter.lsu.edu

Julie A. Lively

Associate Professor
LSU Agcenter & Louisiana Sea Grant
114 RNR Building
Baton Rouge, LA 70803
Phone: 225-578-0771
Fax: 225-578-4227
janderson@agcenter.lsu.edu