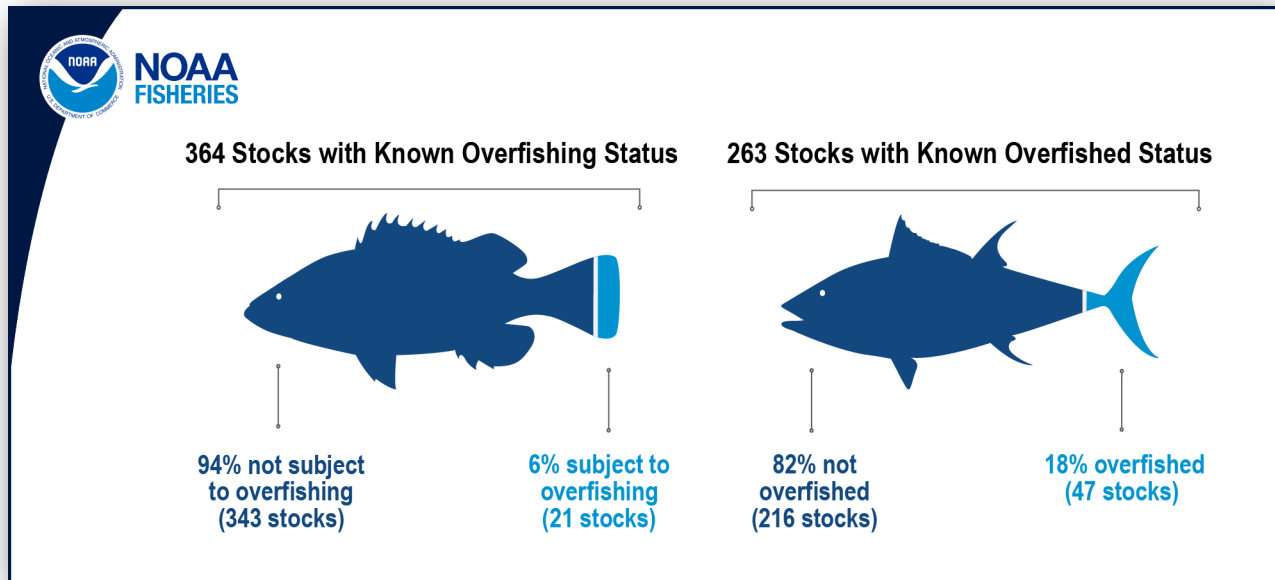




Status of the Stocks: Record-Low Number of Stocks on Overfishing List In 2023



NOAA Fisheries announced that 2023 saw a record low for the number of fish stocks subject to overfishing. The annual Status of the Stocks report is an assessment of the 506 stocks and stock complexes managed by NOAA Fisheries and provides a look at the overall health of fisheries in the U.S. Maintaining sustainable fisheries contributes significantly to the U.S. economy, provides important recreational opportunities and helps meet the growing challenge of increasing our nation’s seafood supply.

In 2023, U.S. fisheries data revealed that 94 percent of stocks are not subject to overfishing and 82 percent are not overfished. These numbers show slight improvements compared to the 2022 figures of 93 percent and 81 percent, respectively. Ongoing positive trends continued with the number of stocks on the overfishing list decreasing by three stocks, reaching an all-time low of 21 stocks, and the number of stocks on the overfished list decreasing by one stock, to 47. Since 2000, NOAA Fisheries has rebuilt 50 stocks.

Of the more than 506 stocks and stock complexes managed by NOAA, 364 have a known overfishing status (343 not subject to overfishing and 21 subject to overfishing) and 263 have a known overfished status (216 not overfished and 47 overfished). (Credit: NOAA)

“By ending overfishing and rebuilding stocks, we are strengthening the value of U.S. fisheries to the economy, our communities and marine ecosystems,” said NOAA administrator Rick Spinrad, Ph.D. “Sustainably managed fisheries are important to the nation’s economy, and provide opportunities for commercial, recreational and subsistence fishing, while keeping a renewable supply of seafood for consumers.”

NOAA Fisheries recently released the Fisheries Economics of the United States report for 2022. The latest data shows U.S. commercial and recreational fishing supported 2.3 million jobs and generated \$321 billion in sales across the broader economy in



2022. The U.S. commercial fishing and seafood industry, as well as recreational fishing, continue to have a broad, positive impact on the economy.

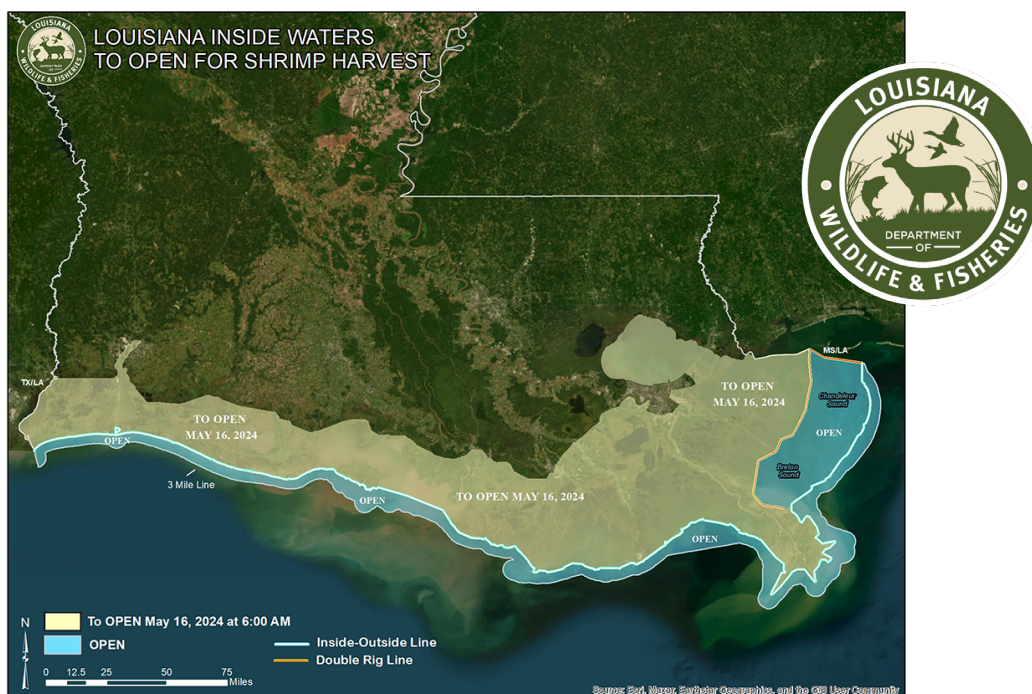
“Managing fisheries sustainably is an adaptive process that relies on sound science, innovative management approaches, effective enforcement and meaningful partnerships with robust public participation,” said NOAA Fisheries assistant administrator Janet Coit. “We continually adjust management measures in response to complex challenges including climate change, rebuilding stocks, ending overfishing and developing new forecasting tools to better predict ocean conditions.”

To keep U.S. fisheries operating sustainably, NOAA Fisheries partners with the U.S. Regional Fishery Management Councils and Interstate Fisheries Commissions, for dynamic, science-based management processes that are proving successful at ending overfishing and rebuilding stocks.

Since 1996, NOAA Fisheries has reported on the status of U.S. fisheries, as required by the Magnuson-Stevens Act. Reporting on the status of fish stocks provides fisheries managers and the public with an account of how well current fisheries management measures are working.

Spring Shrimp Season to Open May 16 in Louisiana Inshore Waters

The Louisiana Wildlife and Fisheries Commission set the opening date within state inshore waters based on information provided by Louisiana Department of Wildlife and Fisheries (LDWF) biologists and public comments.



The Commission action sets the opening date of the spring inshore shrimp season as follows:

All Louisiana inshore waters from the Mississippi/Louisiana state line westward to the Louisiana/Texas state line will open at 6 a.m. on Thursday, May 16, 2024.

LDWF biologists have monitored hydrological parameters and conducted weekly trawl samples throughout the state’s estuarine and nearshore waters since early spring to develop recommendations for the opening of the spring shrimp season. LDWF sampling data were used to calculate a ‘crossover’ date, which is when a minimum of 50 percent of the inshore brown shrimp population reach 100-count per pound or larger.

The commission has granted authority to the secretary of the Department of Wildlife and Fisheries to delay or advance these opening dates if biological and technical data indicate the need to do so, and to close any portion of Louisiana inside waters to protect small juvenile white shrimp if biological and technical data indicate the need to do so, or if enforcement problems develop. Notice of any opening, delaying or closing of a season by the secretary will be made by public notice at least 72 hours prior to such action.

For more information, contact Peyton Cagle at (337) 491-2213 or pcagle@wlf.la.gov.

Recreational Greater Amberjack State, Federal Fishing Season to Reopen May 1 to May 31

The federal National Oceanic and Atmospheric Administration (NOAA) has issued a reopening for the recreational greater amberjack fishery from May 1 until May 31, 2024, and also from Sept. 1, 2024, through Oct. 31, 2024. The greater amberjack recreational season was originally scheduled to be closed for the month of May 2024. The fishery will now open at 12:01 a.m. on May 1, 2024, and remain open through 11:59 p.m. on May 31, 2024, and then reopen at 12:01 a.m. on Sept. 1, 2024, and remain open through 11:59 p.m. on Oct. 31, 2024.

During the closure period from June 1 through Aug. 31, recreational harvest or possession of Greater Amberjack is prohibited in state and federal waters.

For more information, contact Jason Adriance at (504) 284-2032 or jadriance@wlf.la.gov.

LDWF Begins Online Ordering for Oyster Hatchery Larvae

The Louisiana Department of Wildlife and Fisheries (LDWF) has opened its online ordering portal to provide the oyster industry with hatchery-reared oyster larvae produced at the Michael C. Voisin Oyster Hatchery.

Requests will only be taken via the online ordering portal and will be filled based on the order that they are received with prioritization given to in-state orders. Requests made in writing or by phone will not be accepted. Larger orders may be reduced, or split, based on availability of larvae and seed. Payment will not be required at the time of request submission. LDWF will contact those requesting hatchery products at a later date for payment.

The online ordering form can be found at www.wlf.louisiana.gov/page/alternative-oyster-culture.

The availability of oyster larvae is critical for off-bottom, cage-culture oysters in Louisiana. Off-bottom oyster farmers typically must seed the cultch material used in cages with oyster larvae to ensure consistent, adequate oyster product for proper growth.

For more information, contact Program Development at (225) 765-3980, (855) 262-1764 or at oversightprograms@wlf.la.gov.

The Louisiana Department of Wildlife and Fisheries is charged with managing and protecting Louisiana's abundant natural resources. For more information, visit www.wlf.la.gov.



NOAA Fisheries Announces the Recreational Closure of Red Grouper Harvest in Federal Waters of the Gulf of Mexico

Recreational harvest of red grouper in federal waters of the Gulf of Mexico will close at 12:01 am, local time, on July 1, 2024.

The seasonal closure is expected to be effective through the end of the red grouper fishing year on Dec. 31, 2024.

However, NOAA Fisheries will analyze landings data through June 2024 when they become available (likely in mid-to-late August 2024). If these data indicate that the annual catch target was not fully harvested by July 1, 2024, and NOAA Fisheries determines that it is appropriate to reopen red grouper to recreational harvest, NOAA Fisheries will announce the dates of the new season at that time.

Why The Red Grouper Closure Is Happening:

Landings information indicates the 2024 recreational annual catch target of 1,840,000 pounds gutted weight is projected to be met on June 30, 2024.

In accordance with the regulations, NOAA Fisheries must close harvest when the recreational annual catch target has been met or is projected to be met. Therefore, this closure will begin on July 1, 2024.

During The Closure:

During the recreational closure, the bag and possession limits are zero for red grouper in or from federal waters of the Gulf of Mexico.

The prohibition on possession of Gulf of Mexico red grouper also applies in Gulf of Mexico state waters for a vessel issued a valid federal charter vessel/headboat permit for Gulf of Mexico reef fish.



**NOAA
FISHERIES**

How was the date for this closure chosen?

NOAA Fisheries receives recreational data from a variety of sources including the Marine Recreational Information Program, Southeast Region Headboat Survey, Louisiana Department of Wildlife and Fisheries and Texas Parks and Wildlife Department.

The closure date is based on projected harvest rates using recreational landings from 2021 through 2023, and the evaluation of four scenarios that generated predicted closure dates ranging from July 13, 2024, to August 2, 2024.

NOAA Fisheries chose to be conservative by selecting an earlier closure date than the projection scenarios because the red grouper annual catch limit was exceeded by 72 percent in 2021, 35 percent in 2022, and 25 percent (preliminary estimate) in 2023.

Why is NOAA Fisheries closing recreational red grouper when the annual catch target is projected to be met?

If red grouper recreational landings exceed the annual catch limit in a given year, the length of that following year’s recreational fishing season will be reduced to ensure that the recreational annual catch target not exceeded in that following year.

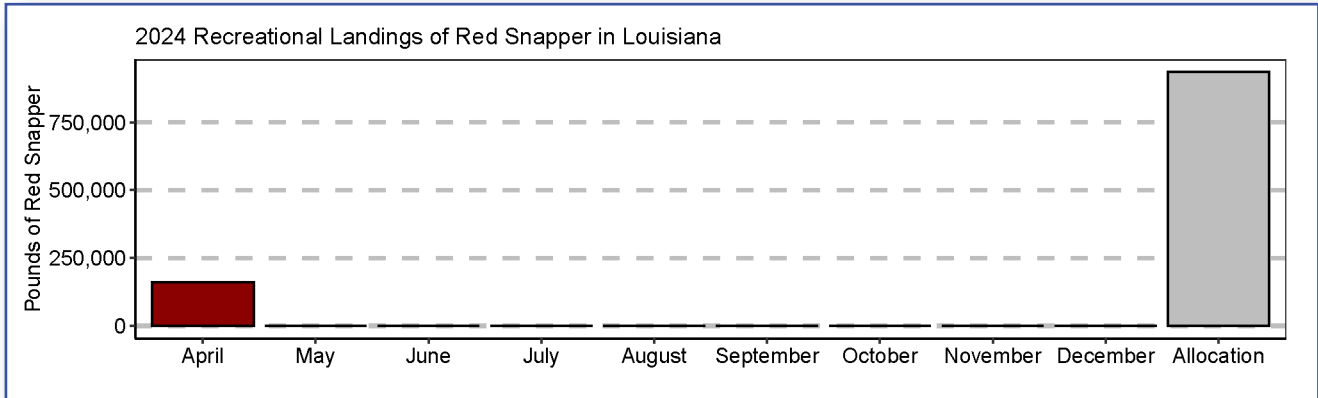
Because the recreational annual catch limit was exceeded last year, regulations require NOAA Fisheries to close the recreational sector in 2024 if the annual catch target is met or projected to be met.

This closure will reduce the likelihood of the 2024 annual catch limit being exceeded.

Louisiana Snapper Watch

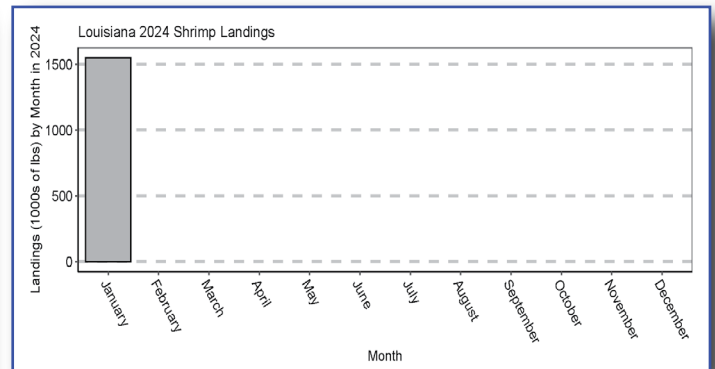
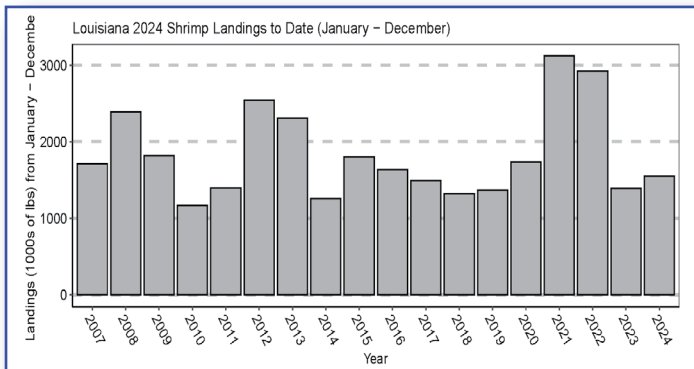
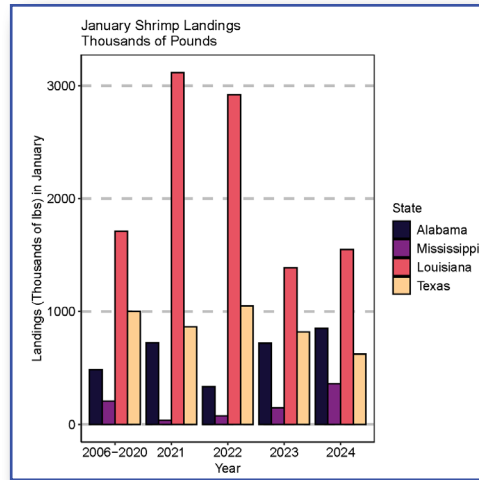
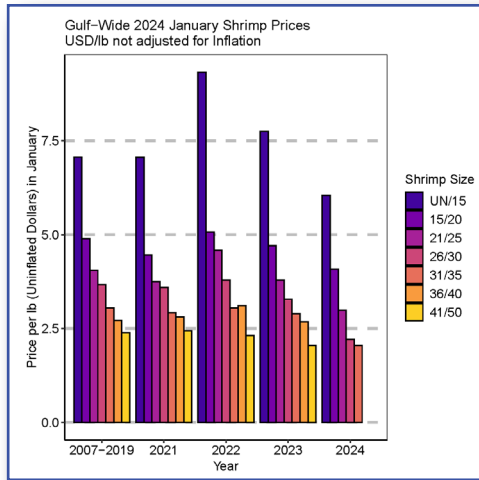
The Louisiana Department of Wildlife and Fisheries (LDWF) released the latest private recreational red snapper landings estimates through April 21, 2024. LA Creel, LDWF’s near real-time landings data collection program, indicates that 161,317 pounds, or 17 percent, of Louisiana’s 2024 annual private recreational allocation of 934,587 pounds have been harvested during the opening week of the Red Snapper season.

The private recreational red snapper season began Monday, April 15, in both state and federal waters, running seven days a week with a daily bag limit of four fish per person and a 16-inch total length minimum size limit. The season will remain open until recreational landings approach or reach Louisiana’s allocation.



Louisiana Shrimp Watch

The shrimp watch data for the March issue includes data through November. All landing data is based on trip ticket data provided by Gulf States and no estimations have been made.



THE GUMBO POT

Everything Seasoned Fried Red Snapper*

Recipe courtesy of Ms. Sarah's County Kitchen

From Ms. Sarah: In keeping with one of the more recent food trends, I decided to try my own interpretation of the “Everything” seasoned. Use premade or find my version of the beloved spice mixture down below.

Please reach out to the editor on suggestions for recipes or ingredients to use in future editions.

We are always looking for feedback and improvement!



Ingredients:

- 1 lb. Gulf caught Red Snapper – fileted
- 2 eggs
- 1/3 cup breadcrumbs
- 2/3 cup Bisquick
- 1 ½ tsp Everything seasoning (or make your own:
 - 1 tbsp dried onion
 - ½ tsp sesame seeds
 - ½ tsp dried garlic,
 - ½ tsp poppy seed
 - ½ tsp flaky sea salt)
- 1 inch of vegetable oil in your favorite skillet

Directions:

1. Slice the Red Snapper into even pieces, (this will ensure even frying) and pat dry.
2. Add oil to the skillet, heat on medium.
3. In a bowl add the 2 eggs, mixing until frothy.
4. In another bowl, mix the breadcrumbs, Bisquick, and Everything seasoning together.
5. While the oil is heating, dredge the pieces of fish in the egg first, making sure to cover the whole piece. Using a fork, transfer the piece over, into the breadcrumb mixture. Using a separate fork, cover the egg washed piece of fish with the breadcrumbs completely.
6. When the oil is ready (throw a pinch of the breadcrumb mixture in to see if it bubbles), add the breaded fish pieces one at a time. Working in batches, if there isn't enough room for all the pieces, fry the fish for 2-3 minutes on both sides.
7. Once finished frying, remove the fried fish onto a paper towel lined plate, salt to taste.
8. Enjoy!

**Total time: 20 minutes, Feeds 2-4 people.*

For more information, contact your local extension agent:

Thu Bui

Marine Agent
St. Mary, Iberia and Vermilion Parishes
Phone: (337) 828-4100, ext. 300
tbui@agcenter.lsu.edu

Thomas Hymel

Marine Agent
Iberia, St. Martin, Lafayette, Vermilion, St. Landry and
Avoyelles Parishes
Phone: (337) 276-5527
thymel@agcenter.lsu.edu

Carol D. Franze

Marine Agent
Southeast Region
Phone: (985) 875-2635
cfranze@agcenter.lsu.edu

Dominique Seibert

Marine Agent
Plaquemines and St. Bernard Parishes
Phone: (504) 433-3664
dseibert@agcenter.lsu.edu

Haley Gambill

Marine Agent
Terrebonne and Lafourche Parishes
Phone: (985) 873-6495
mgambill@agcenter.lsu.edu

Mark Shirley

Marine Agent
Jefferson Davis, Vermilion, Acadia, St. Landry,
Evangeline, Cameron, Calcasieu, Lafayette,
Beauregard and Allen Parishes
Phone: (337) 898-4335
mshirley@agcenter.lsu.edu

Albert 'Rusty' Gaudé

Marine Agent
Jefferson, Orleans, St. Charles and St. John Parishes
Phone: (504) 433-3664
agaude@agcenter.lsu.edu

We would like to hear from you! Please contact us regarding fishery questions, comments or concerns you would like to see covered in the Lagniappe. Anyone interested in submitting information, such as articles, editorials or photographs pertaining to fishing or fisheries management is encouraged to do so.

Please contact Lagniappe editor Jeffrey Plumlee at jplumlee@agcenter.lsu.edu

Jeffrey Plumlee

Fisheries Specialist
Louisiana State University AgCenter
334 Renewable Natural Resources Building
Baton Rouge, LA 70803
Phone: 225-578-4102
Email: jplumlee@agcenter.lsu.edu

Be sure to visit the *Lagniappe* blog for
additional news and timely events between issues.
<https://louisianalagniappe.wordpress.com/>

Lagniappe Fisheries Newsletter

Editor: Jeffrey Plumlee

Web coordinator: Melissa Castleberry

Copy editor: Roy Kron