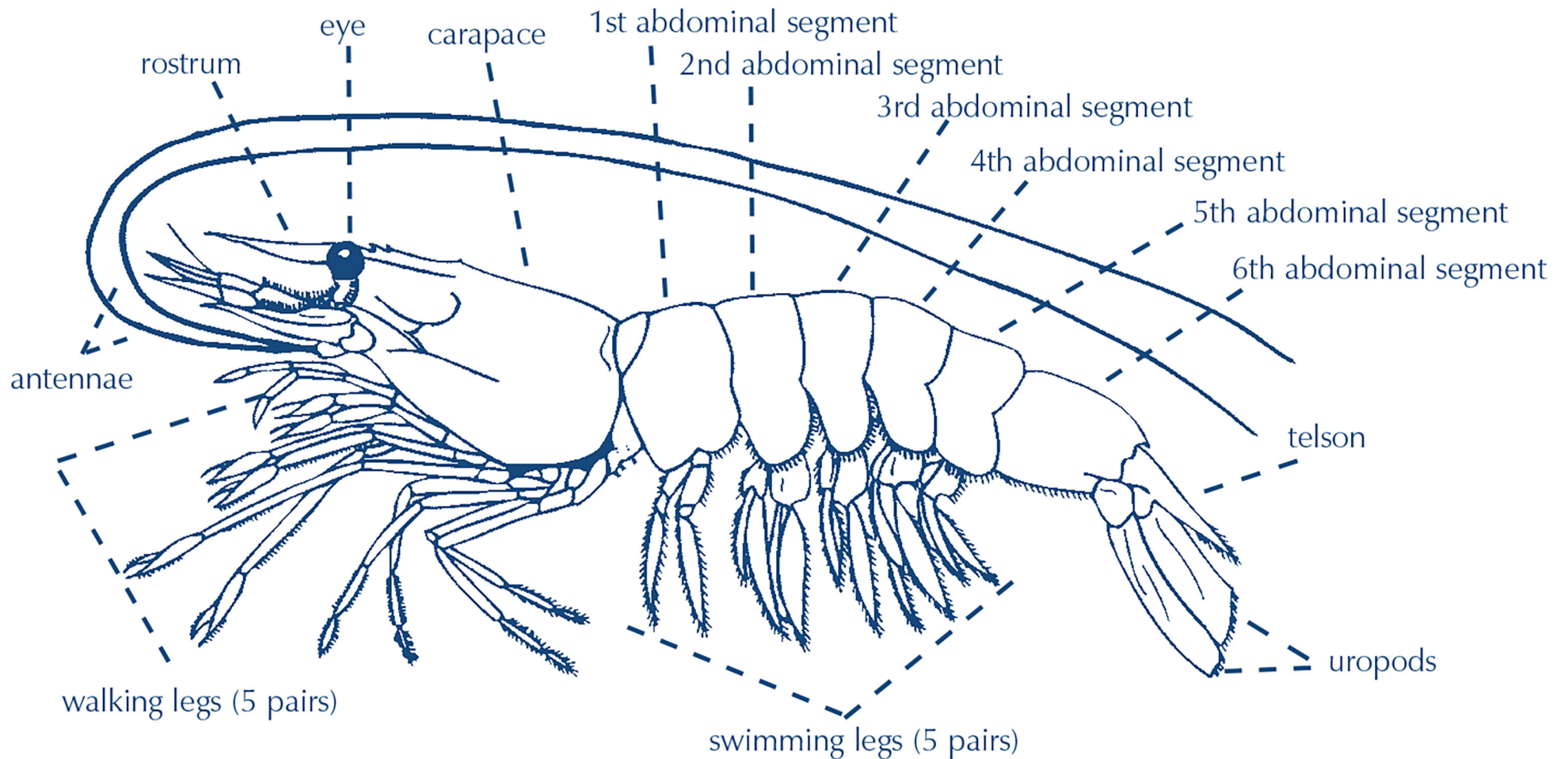
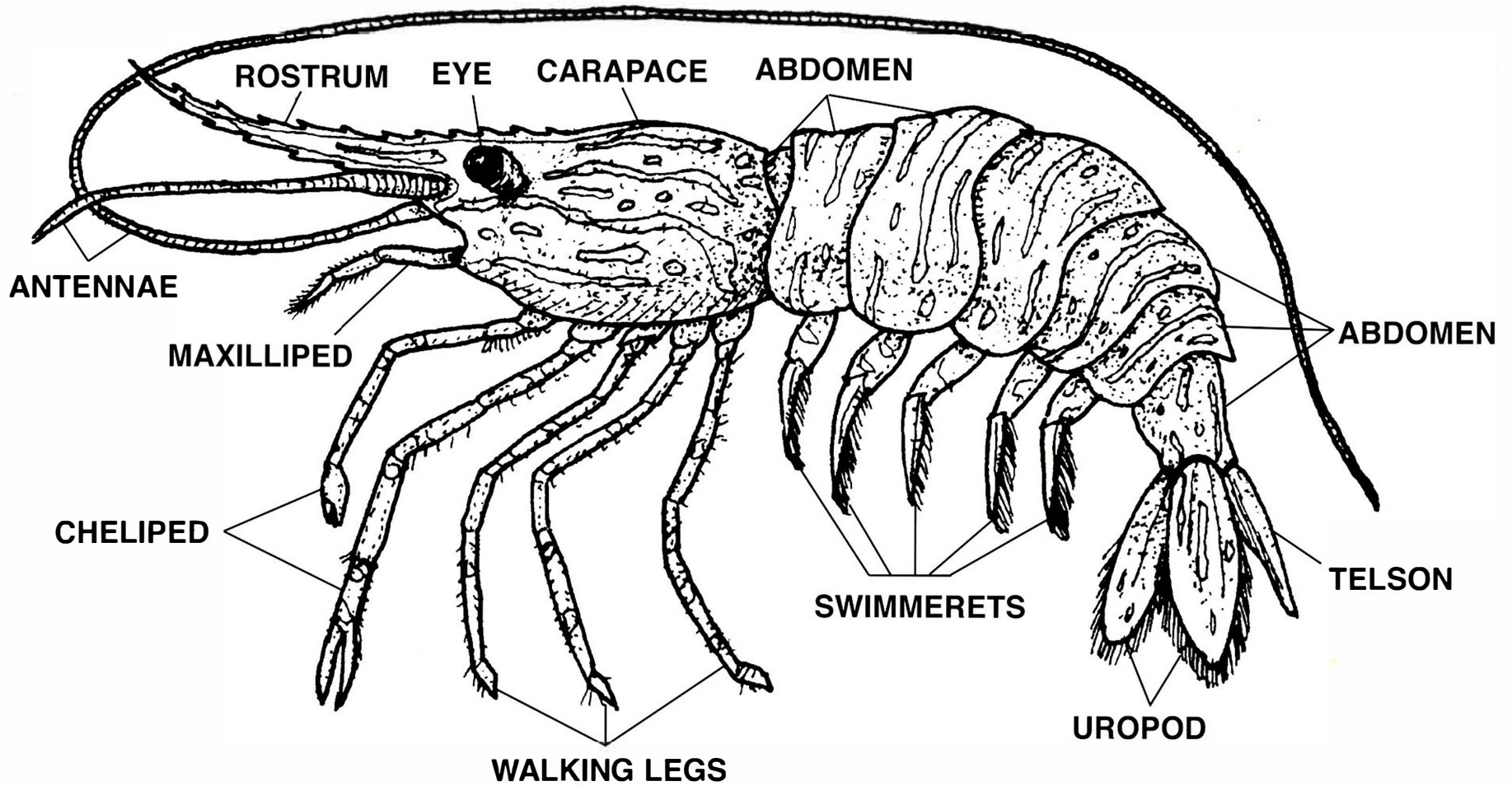


# SHRIMP DIAGRAM #1



# SHRIMP DIAGRAM #2



# LIFE CYCLE

# PREDATORS

# PREDATORS

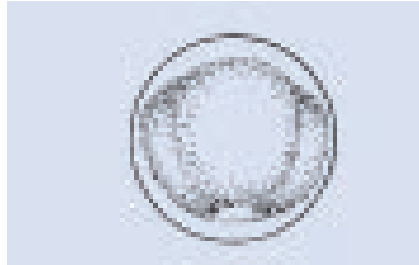
# BUSINESSES

# CONSUMERS

# CONSUMERS



# SHRIMP EGG

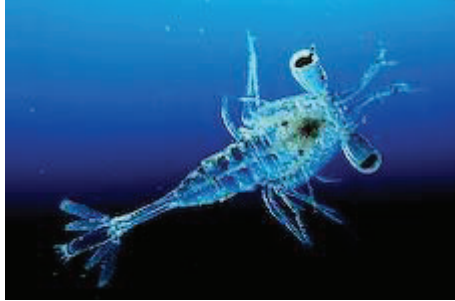


Single Shrimp Egg



Brine Shrimp Eggs

# SHRIMP LARVAE



Cleaner Shrimp Larva



Crustacean Larva



Stage 1 Larva

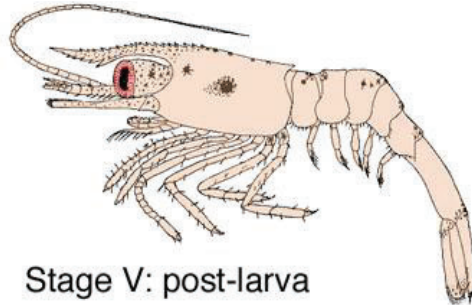


Stage 2 Larva



Fairy Shrimp Larva

# POSTLARVA SHRIMP



Stage V: post-larva



Marine Shrimp Post-Larvae



Post Larval Shrimp from Texas



Post Larvae from Central America

# JUVENILE SHRIMP



Juvenile

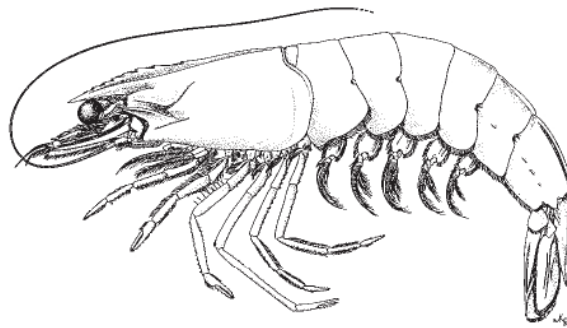


Juvenile Shrimp from Florida



Juvenile Shrimp from Pacific

# SUBADULT SHRIMP



Subadult Northern Brown Shrimp



Sub-adult Shrimp

# ADULT SHRIMP



# PREDATORY FISH



Southern Flounder



Spotted Seatrout



Atlantic Croaker



Red Drum



# PREDATORY FISH

*My prey are juvenile  
shrimp* – I can be a  
**Southern Flounder,  
Spotted Seatrout, Atlantic  
Croaker, Red Drum,  
Inshore Lizard Fish,, or  
Pinfish**



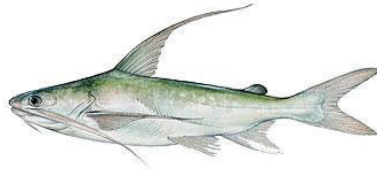
# PREDATORS



Pinfish



Sheepshead



Gafftopsail Catfish



Southern Kingfisher

# PREDATORS

*My prey are subadult shrimp*

– I can be a **Pinfish**,

**Sheepshead**, Red Drum, Black Drum, Atlantic Croaker, Sand Seatrout, Sea Catfish,

**Gafftopsail Catfish**, **Southern Kingfisher**, Southern Flounder, or Spotted Seatrout

# PREDATORY FISH



Creville Jack



Florida Pompano



Atlantic Sharpnose Shark



Red Snapper

# PREDATORY FISH

*My prey are adult shrimp – I*

can be a Spotted Seatrout,

Lady Fish, **Crevalle Jack**,

Bluefish, **Florida Pompano**,

Spanish Mackerel, Silver

Seatrout, Black Tip Shark,

**Atlantic Sharpnose Shark**,

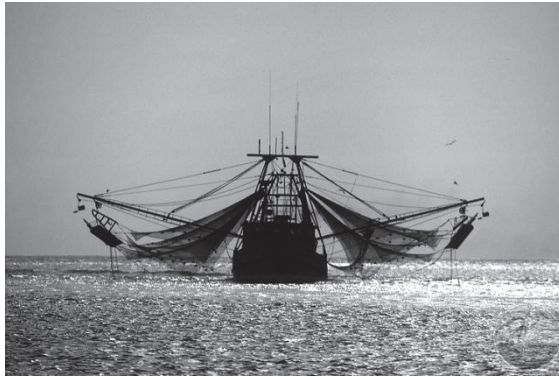
Gulf Kingfish, **Red Snapper**,

Sand Seatrout, or Redfish

# SHRIMP CAPTAIN



Miss Bonnie Shrimp Boat



Working Shrimp Boat



Forrest Gump

# DOCK



Dock Workers in Louisiana



Boats at the Dock in Louisiana



Buying Shrimp at the Dock



Delcambre Direct Seafood



# SHRIMP DRYING PLANT



Drying Plant in Manila Village, LA



Louisiana Dried  
Shrimp

# SHRIMP PROCESSING PLANT



Lafitte Frozen Seafood Processing Plant



Motivatit Seafoods



# REFRIGERATED TRUCK



Drago's Fleet



Lafitte Frozen Foods Truck



Louisiana Seafood Truck

# GROCERY STORE



Wild Gulf Shrimp for sale



# RESTAURANT



Magnolia Café



Shrimp Po'boy



Chef



Shrimp Pasta



# SHRIMP BOIL PARTY HOST



Boiled Shrimp



Family Shrimp Boil



Shrimp Boil Pot

# SHOPPER



Shopping for Seafood



Seafood Counter



# RESTAURANT DINER



Eating Sushi



Shrimp Cocktail

# CHEF



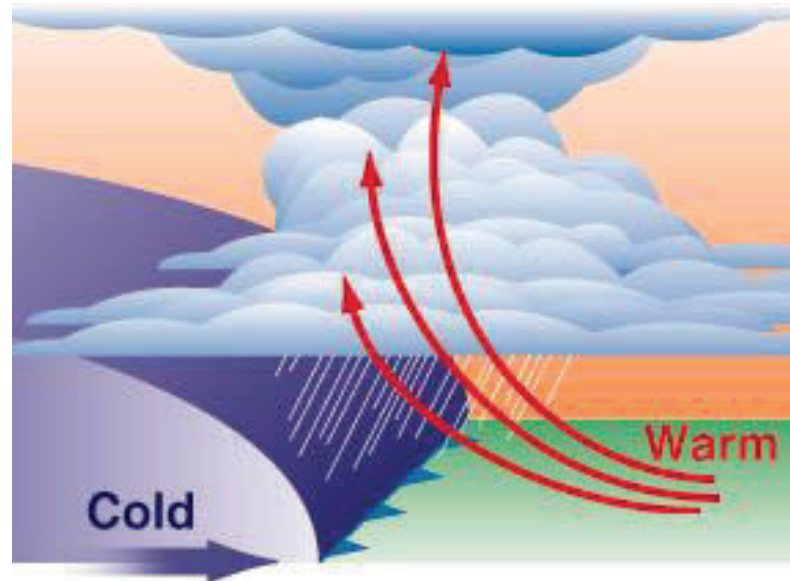
Great American Seafood Cookoff



Chef



# WEATHER





# WEATHER

Cold weather changes can have an impact on the movement of subadult shrimp. Cold fronts and heavy rainfall push subadult shrimp towards barrier islands and open water in the Gulf of Mexico. Shrimp will gather behind barrier islands until they get harvested or until a strong tide carries them out to open water. Similarly, warm weather brings currents from the Gulf of Mexico, which carries postlarval shrimp into the estuaries.

# HURRICANES



Hurricane Katrina, 2005

# HURRICANES

Hurricanes cause a lot of damage to coastal infrastructure. Storm damage can affect shrimp boats, docks, processing plants, grocery stores and restaurants.

# FOREIGN IMPORTED SEAFOOD



Frozen Imported Shrimp



Foreign Fish Counter

# **FOREIGN IMPORTED SEAFOOD**

Eighty-five percent of seafood bought and consumed in the United States comes from countries outside of the United States (e.g., China, Thailand). Shrimp imported from other countries is sold in grocery stores and restaurants at a much cheaper price than fresh shrimp from the Gulf of Mexico.

# MARINE POLLUTION



BP Oil Spill, 2010



Wastewater Effluent



Debris in the Ocean



Trash on the Beach



# MARINE POLLUTION

Marine pollution includes oil spills, toxic chemical spills, water pollution and marine debris. Every year, this human-driven pollution causes marine environments to be unhealthy and causes marine species to die.

**WEATHER**

**WEATHER**

**WEATHER**

**WEATHER**

**WEATHER**

**WEATHER**

**WEATHER**

**WEATHER**

**WEATHER**

**WEATHER**



**MARINE  
POLLUTION**

**MARINE  
POLLUTION**

**MARINE  
POLLUTION**

**MARINE  
POLLUTION**

**MARINE  
POLLUTION**

**MARINE  
POLLUTION**

**MARINE  
POLLUTION**

**MARINE  
POLLUTION**

**MARINE  
POLLUTION**

**MARINE  
POLLUTION**

**HURRICANES**

**HURRICANES**

**HURRICANES**

**HURRICANES**

**HURRICANES**

**HURRICANES**

**HURRICANES**

**HURRICANES**

**HURRICANES**

**HURRICANES**

**FOREIGN  
IMPORTS**

**FOREIGN  
IMPORTS**

**FOREIGN  
IMPORTS**

**FOREIGN  
IMPORTS**

**FOREIGN  
IMPORTS**

**FOREIGN  
IMPORTS**

**FOREIGN  
IMPORTS**

**FOREIGN  
IMPORTS**

**FOREIGN  
IMPORTS**

**FOREIGN  
IMPORTS**