

# Putting Science to Work for Coastal Communities



## \$37.6 Million

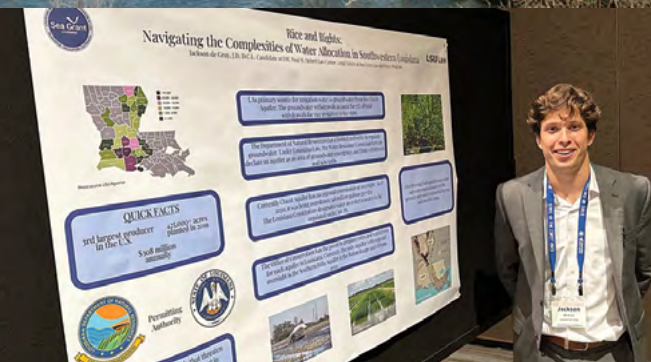
Economic Benefit from Sea Grant Activities  
2022

## 271 Businesses and 1,551 Jobs Created/Sustained

2022



*On the front lines of coastal  
crisis management and recovery for:*  
**28 Hurricanes,**  
*and the nation's largest offshore  
oil spill since 2005*



## 223,445

Attendees at Sea  
Grant Professional  
Presentations  
2022



## 18,797 PK-12 Students Reached

2022



## 95

Undergraduate and  
Graduate Students  
Supported  
2022

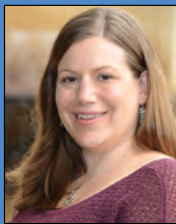
# Louisiana Sea Grant Offices



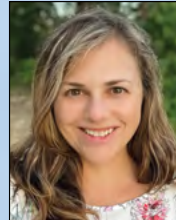
## Agents

-  Thu Bui, Marine Agent
-  Carol Franze, Marine Agent
-  Albert "Rusty" Gaudé, Marine Agent
-  Thomas Hymel, Marine Agent
-  Haley Gambill, Marine Agent
-  Kevin Savoie, Marine Agent
-  Dominique Seibert, Marine Agent
-  Mark Shirley, Marine Agent
-  Elizabeth Robinson, Interim Director, Oyster Research Lab
-  Agent Office Location

## Louisiana Sea Grant Staff Directory



**Julie Lively**  
Executive Director  
237 Sea Grant Building  
Louisiana State University  
Baton Rouge, LA 70803  
[julieann@lsu.edu](mailto:julieann@lsu.edu)



**Melissa Trosclair Daigle**  
Resiliency Specialist  
218 Sea Grant Building  
Louisiana State University  
Baton Rouge, LA 70803  
[mtrosc2@lsu.edu](mailto:mtrosc2@lsu.edu)



**Matt Bethel**  
Director of Research  
232 Sea Grant Building  
Louisiana State University  
Baton Rouge, LA 70803  
[mbethe3@lsu.edu](mailto:mbethe3@lsu.edu)



**Dani Dilullo**  
Director of Education & Engagement  
201 Sea Grant Building  
Louisiana State University  
Baton Rouge, LA 70803  
[ddiullo@lsu.edu](mailto:ddiullo@lsu.edu)



**Thu Bui**  
Marine Agent  
St. Mary, Iberia & Vermilion parishes  
600 Main Street  
2nd Floor Blevins Building  
Franklin, LA 70538  
[tbui@agcenter.lsu.edu](mailto:tbui@agcenter.lsu.edu)



**Julie Falgout**  
Seafood Industry Liaison  
Terrebonne Parish  
Extension Office  
521 Legion Avenue  
Houma, LA 70364  
[jfalgout@agcenter.lsu.edu](mailto:jfalgout@agcenter.lsu.edu)



**Rex Caffey**  
Director of Marine Extension  
179 Woodin Hall  
Louisiana State University  
Baton Rouge, LA 70803  
[rcaffey@agcenter.lsu.edu](mailto:rcaffey@agcenter.lsu.edu)



**Carol D. Franze**  
Marine Agent  
St. Tammany & Tangipahoa parishes  
1301 N. Florida Street  
Covington, LA 70433  
[cfranze@agcenter.lsu.edu](mailto:cfranze@agcenter.lsu.edu)







**Haley Gambill**  
Marine Agent  
Terrebonne and Lafourche  
parishes  
8026 Main Street, Suite 402  
Houma, LA 70360  
[mgambill@agcenter.lsu.edu](mailto:mgambill@agcenter.lsu.edu)



**Jeffrey Plumlee**  
Fisheries Specialist  
334 Renewable Natural  
Resources Building  
Louisiana State University  
Baton Rouge, LA 70803  
[jplumlee@agcenter.lsu.edu](mailto:jplumlee@agcenter.lsu.edu)



**Albert "Rusty" Gaudé**  
Marine Agent  
Jefferson, Orleans, St. John  
& St. Charles parishes  
1221 Elmwood Park Blvd.  
Suite 300  
Jefferson, LA 70123  
[agaude@agcenter.lsu.edu](mailto:agaude@agcenter.lsu.edu)



**Elizabeth Robinson**  
Interim Director of Grand Isle  
Oyster Research Lab  
135 LSU Drive  
Grand Isle, LA 70358  
[erobi22@lsu.edu](mailto:erobi22@lsu.edu)



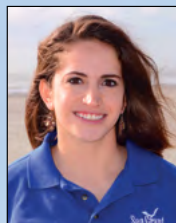
**M.P. Hayes**  
Water Quality Specialist  
219 Madison B. Sturgis Hall  
Louisiana State University  
Baton Rouge, LA 70803  
[mhayes@agcenter.lsu.edu](mailto:mhayes@agcenter.lsu.edu)



**Kevin Savoie**  
Marine Agent  
Cameron & Calcasieu parishes  
10098 Gulf Highway  
Lake Charles, LA 70607  
[ksavoie@agcenter.lsu.edu](mailto:ksavoie@agcenter.lsu.edu)



**Thomas Hymel**  
Marine Agent  
Iberia, St. Martin, Lafayette,  
Vermilion, St. Landry &  
Avoyelles parishes  
P.O. Box 166  
Jeanerette, LA 70544  
[thymel@agcenter.lsu.edu](mailto:thymel@agcenter.lsu.edu)



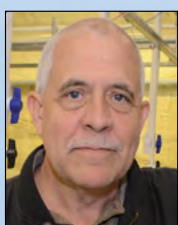
**Dominique Seibert**  
Marine Agent  
Plaquemines & St. Bernard parishes  
479 F. Edward Hebert Blvd., Suite 201  
Belle Chasse, LA 70037  
[dseibert@agcenter.lsu.edu](mailto:dseibert@agcenter.lsu.edu)



**Roy Kron**  
Director of Communications  
103 Sea Grant Building  
Louisiana State University  
Baton Rouge, LA 70803  
[rkron@lsu.edu](mailto:rkron@lsu.edu)



**Mark Shirley**  
Marine Agent – Jefferson Davis,  
Vermilion, Acadia, St. Landry,  
Evangeline, Cameron, Calcasieu,  
Lafayette, Beauregard & Allen parishes  
1105 West Port Street  
Abbeville, LA 70510  
[mshirley@agcenter.lsu.edu](mailto:mshirley@agcenter.lsu.edu)



**C. Greg Lutz**  
Aquaculture Specialist  
227 School of Renewable  
Natural Resources Building  
Louisiana State University  
Baton Rouge, LA 70803  
[glutz@agcenter.lsu.edu](mailto:glutz@agcenter.lsu.edu)



**Evelyn Watts**  
Seafood Extension Specialist  
101 LSU Union Square  
Louisiana State University  
Baton Rouge, LA 70803  
[egwatts@agcenter.lsu.edu](mailto:egwatts@agcenter.lsu.edu)



**Liz McQuain**  
Community Science  
Federal Liaison  
206 Sea Grant Building  
Louisiana State University  
Baton Rouge, LA 70803  
[lizmcquain@lsu.edu](mailto:lizmcquain@lsu.edu)



**James Wilkins**  
Director of Law & Policy Program  
217 Sea Grant Building  
Louisiana State University  
Baton Rouge, LA 70803  
[jwilkins@lsu.edu](mailto:jwilkins@lsu.edu)



**Niki Pace**  
Sustainability Coordinator  
220 Sea Grant Building  
Louisiana State University  
Baton Rouge, LA 70803  
[nlpace@lsu.edu](mailto:nlpace@lsu.edu)





# Louisiana Sea Grant Putting Science to Work for Coastal Communities

Feb. 1, 2022 to Jan. 31, 2023 highlights

With the assistance of Louisiana Sea Grant, Guidry's Catfish and Processing Inc., the largest catfish processing facility in Louisiana, received a \$7 million grant from Meat and Poultry Processing Expansion Program to expand its capacity, equipment, workforce, comply with safety requirements and create new jobs and revenue sources for the local community.



LSG leveraged existing university partnerships and relationships with engaged graduate students to provide a first-of-its-kind Science Communication conference for Louisiana graduate students. Fifty-two students from eight Louisiana universities attended the two-day workshop to improve their science communication skills.

Louisiana Sea Grant-sponsored researchers developed a Harmful Algal Bloom (HAB) forecasting model capable of predicting potential HAB events in Lake Pontchartrain 10 days in advance, significantly improving on the current model. With daily HAB predictions, water quality managers can monitor and prevent HAB problems more effectively, improving the lake's water quality.

